

ATTACHMENT

A

Officers'
Reports

*Life is hard,
Sometimes,
Crazy, mixed-up, messed-up.
And there you are Missionaries,
in the middle of it all.
Just doing your thing...
Being strong and brave and beautiful
like it's no big deal.
But let me tell you, it is.
Not everyone can do what you can do.
Not everyone can handle things the way you can.
And I'll tell you a little secret —
While you wonder sometimes
if you're doing okay...
others are just watching in wonder!
Be strong and let your heart take courage,
all you who hope in the Lord.*

Psalm 31:24 NASB



Dr. Princess Ann Rogers Pegues
*The Tenth President of the
Women's Missionary*

The President's Report

TO: Senior Bishop L. L. Reddick, III, the College of Bishops and their spouses, Patron Bishop James B. Walker, Bishop Marvin Thomas, chairman of the College of Bishops, College of Bishops, Council Officers, Immediate Past President, Dr. Elnora P. Hamb; Dr. Judith E. Grant, past president; Dr. Sylvia M. Faulk, president emeritus; General Officers and their spouses, the Judicial Council, Connectional officers, Heads of Educational Institutions, Clergy, Laity, Ecumenical Guests, the Executive Board and all my beloved Missionaries:

In the name of Jesus Christ who commanded us to go out into the highways and byways to help spread His everlasting gospel, I greet you. I thank the Lord, for all the blessings we received in 2016 and allowing us to see the New Year of 2017. We give thanks to God for all He has done, what He is doing and what He will do. We give God thanks for allowing the Council to be of service to others and the Christian Methodist Episcopal Church.

It is my great pleasure and honor to make my sixth report to my beloved missionaries, friends, and members of the CME Church. The Lord has brought us to come together one more time and for that I am so grateful.

I realize that we are here today not because of the work I have done nor the work that you have done - but we are here today because of God's grace! Let us count our blessings for God has allowed the Council to be of service to others for 98 years! *I thank God for His blessings and the mercies He's bestowed, "I'm drinking from my saucer, 'Cause my cup has overflowed."*

I am truly grateful to all you who have supported and participated in the many activities of the missionaries from the local level to the Council level. So many things have happened in our lives, our community, our nation and around the world. Some good and some not so good, but through it all, we are thankful that he has brought us through. A new president of the United States has been elected. While a lot of us feel dismayed, however, you know and I know that the Lord is still in charge - and he brought is through slavery and Jim Crow - and surely, he will bring us through the next four years!

A Grateful Heart

My heart is filled with the deepest gratitude for you, my dear missionaries, friends and faithful supporters of the Women's Missionary Council. The arrival of 2017 brings to me a fresh realization of how much your dedication means to the Women's Missionary Council and the growth that we have incurred.

The Departments, Committees, Commissions, Regional Presidents

Now, before I share with you the work done the by the wonderful hard working missionaries across the Connection in 2016 and looking over the audience you can see they are dressed in their beautiful white outfits. I want to dispel a rumor that has reached me - way down in the small town of Bastrop, Louisiana and that is, "that the missionaries just wear white." I want all of you in this ballroom to tell all of the members of the CME Church - from the pulpit to the pews that "when the white goes on - the work is

done." And I want you to pay close attention to the reports of the officers, division leaders, and representatives of the affiliates and you will, I know, agree with me. Please share with your pastor and the members at your church the reports that are given by the officers, departmental secretaries, and the affiliate organizations. So, we can put to rest that rumor!

The Missionary Wheel of the Council has its spokes oiled and tuned and has been kept rolling through the diligent leadership and work done by the division leaders, departmental secretaries, committee/commission chairs, and with the very capable leadership of our Regional Presidents and the help of their dedicated and committed members.

I am always amazed by the work done as shown in the reports of the department Secretaries, Committee and Commission Chairs. Truly, you have been very busy and have made tremendous efforts to carry out the The Great Commission. So, on behalf of all the people you have helped, I say thank you for a marvelous job of being about God's business.

Many thanks to all of you for supporting the Stole project. This project was done to have an identifying tool for the missionaries/denomination and to help generate funds for the work of the Council. And thanks to

We are cognizant of the fact that because of those who worked so diligently, we can say as Moses said to the Israelites: *"you are living in houses that you didn't build and your houses are filled with all kinds of good things that you didn't provide, using wells you did not dig, and sitting under trees you didn't plant... so don't forget that it was the Lord who has brought you thus far."* Deut.6:10-11.

And look where he's brought us from! Who would have thought and believed that from a small organizing group of about 41 women in 1918 that this organization would grow and have a membership over 50,000 in 2016 and is one of the most viable organizations of the CME Church.

We have made financial contribution at home and abroad. We supplement the salaries of the teachers in Jamaica by contributing annually. The three CME schools in Jamaica that the Council supports are: The Pauline B. Grant School, the Joseph C. Coles School, and the Mae C. Linsey School. All of the schools are Pre-K. The Pauline B. Grant School is located next to the Good News CME Church.

• **The Here I Am Ministries**

Then I heard the voice of the Lord saying, "Whom shall I send? And who will go for me us?" And I said, "Here am I. Send me!" Isaiah 6:8.

This program was introduced in September 2011 and is an outreach program with the main focus on the Black Family and Community Service to help alleviate some of the problems found in our communities.

The problems in our communities and societies are great and they touch the lives of all of us. As you know a couple of year ago, the Supreme Court "gutted" the Civil Rights Act.

What with the Supreme Court decisions concerning voting rights we must get involved and devise workshops, programs, forums, etc., to help prepare our people to register to vote and get the proper credentials so that they can participate in the political process. The killing of our young boys/men hasn't changed - only the names of the young

men killed are different. I am again asking and pleading with you to get involved with those organizations who are working hard to put an end to this senseless killing and under the current administration; we must absolutely be diligent and realize that this is an urgent matter.

"Black Lives Matter" is a rallying cry/slogan for the many injustices in the Criminal Justice System. We, the members of the Executive Committee and staff, charge missionary societies on all level to publically commit to accept the responsibility of working towards social equality in your respective neighborhoods surrounding communities and our society by tackling issues of race order, and social justice to further improve the overall well-being of those most disadvantaged by structural conditions and unjust laws of society.

As I traveled across our Zion to many of your individual churches speaking, presenting workshops, and visiting your annual conferences at your invitation, I witness the awesomeness of our international organization. The women who serve at the local level – the "grassroots" or in the "trenches" if you will, are so dedicated and are truly "being about our Father's business" of doing mission at every opportunity and leaving the "walls" of the church and their meeting rooms to "take it to the streets." I am so grateful to all of you for answering Jesus' call as Isaiah did, saying "Here Am I, send me." Last year I said that I am convinced that God keeps blessing us to be a blessing to others, and I am saying it again this year.

Education

Since we were officially organized in 1918, one of the Council's major priorities has been that of educating our children. In keeping with that tradition, our Hele-

na B. Cobb and P. Ann Pegues SOS (Save Our Sons) annual Scholarship funds provide scholarships and grants to our young people to help them get the best education possible. We have always invested in education by providing scholarships to our students. The finance for these scholarships comes from the Regions. The Regions turned in **\$46,446.00** for Helena B. Cobb and **\$15,988.75** for the P. Ann Pegues SOS Program for a total of **\$62,434.75**. (See the treasurer's report for details). As the preachers' say, **"Somebody ought to say Amen and thank you Jesus."**

Our four year Helena B. Cobb Scholarship winners and P. Ann Pegues Save Our Sons (SOS) Scholarship Programs are doing just fine. We have given 282 students @ \$200.00 scholarships totaling \$57,800. In addition, we have given our Helena B. Cobb female higher education students \$4,000 per year and our P. Ann Pegues Save Our Sons male higher education students \$2,000 per year making a total of **\$88,434.75**. *Surely, I am drinking from saucer, 'caused my cup has overflowed!* For additional information see the vice president and treasurer's report. In addition we have supported our colleges by making a financial donation to them as well. We rank our financial support of our college students at the top of the chart. We have also made donations to "hardship" students. (Now, in the words of Bishop E. Lynn Brown, give yourself a hand). For more information about the scholarships, please see the vice president's report.

We have also contributed to Jamaica for aid in paying teachers' salaries and to the Eleventh Episcopal District for its mission work and other overseas mission asking totaling \$65,080. These donations were made possible through the

generosity of our Overseas and Meals for Millions Departments

Our mentoring program for males is slowly being implemented by the Regions, and we need the help of more men of the church to help with this program.

Through the Missionary March held at the Annual Conferences, we have contributed almost \$600,000 to the Bishops' Expansion programs. (See the Region President's reports in the Report Book).

Communication/Technology

Our website, www.womensmissionarycouncilcme.org is active and current. It has a wealth of information and is so designed that missionaries can be aware of announcements, activities and events of the missionaries, the CME Church, our affiliates, sister denominations, and friends

Each month you will find on our site:

- My monthly *President's Pen Online* message is posted the first of the month and is designed to inform the missionaries of upcoming events and information being requested from the Council.
- A monthly meditation is done by the Spiritual Life and Message Department and can be downloaded to be used in your missionary meetings.
- A daily Black History fact.
- Information from the departmental secretaries, committees and commissions chairs.
- Information from our Affiliate Organizations.
- Announcements and events from across the Connection, and much, much more. Visit us and see for yourself!

Special Appeal

As you know, President Obama has launched "**My Brother's Keeper**" initiative. The initiative is aimed at empower-

ing **boys and young men of color**, a segment of our society which too often faces disproportionate challenges and obstacles to success. We need to help break down barriers, clear pathways to opportunity, and reverse troubling trends which show too many of **our boys and young men of color slipping through the cracks in our society**.

I was very happy to hear this because the Council's SOS Program (Save Our Sons) has some of the same objectives as My Brother's Keeper. In light of the killing of so many of our young men who make the News but there are countless others who don't make the News, so I am again asking the Men to Ministry Department of the CME Church, pastors, and any group or individuals to work with us in developing and putting into action a progressive program of action to address the serious challenges that confront males of color. **This challenge was issued last year, but so far, I haven't had any takers.** If you have suggestions, please share them with me.

It has truly been my pleasure and honor to visit with missionaries across our Zion including serving as speaker, presenting workshops, participating in the missionary marches and Missionary Institutes. In addition, I have attended the Pastors' Conferences, Trustee Board Meetings of Miles College and Miles Founders' Day, the General Connectional Boards, and Phillips School of Theology, General Officers Meetings and the Unity Summit.

As it is our custom to leave a city where the Executive Board meets a "little better," at our meeting in 2015, we gave school supplies to one of the area schools and received hundreds of notes from the students, which are on display at this meeting. Please take a few minutes to

read some of the thank you notes that were written by the students, they will warm your heart and serve as a testimony of the great work you are doing. We also made a donation to Stillman College for the Dr. Willie Clyde Jones Endowed Scholarship. As you know, Dr. Jones was a staunch supporter of the missionaries.

As a servant president, I have visited churches across the Connection, participated in workshops, attended local and district meetings. I have served as guest speakers for women's day, missionary day and Black History programs and have served on various panels.

Ecumenical Involvement

The Council is affiliated with several ecumenical organizations. I have been active with most of our affiliated organization. I was a delegate to the 13th World Federation of Methodist and Uniting Church Women Assembly held in Houston, Texas in July and was elected President of the North America Area. As you know, the World Federation of Methodist and Uniting Church Women is made up of women from the Africa Methodist Episcopal Zion Church, the United Methodist Church, and the CME Church. We will have our North America Area Seminar November 9-13 at the Scaritt Bennett Center in Nashville, TN. I am asking the women of the CME Church to save the date and come and support me. It would be my great joy and pleasure to have at least 75 members of Women's Missionary Council and the CME Church present

Those Gone On

Since our last Executive Board, we have lost many, many, missionaries across our Zion whose names are called at each Executive Board. All of our de-

ceased members' names are recorded in our Necrology Book and will be remembered at our Necrology Service this week.

We will continue with the programs we have and expand our SOS (Save Our Sons) and incorporate President Obama initiative My Brother's Keeper. It goes without saying, that I love this initiative and it is, in my opinion, long overdue! Missionaries, this initiative goes hand and hand with our SOS Program. I thank those of you who have incorporated My Brother's Keeper in your "*Here I Am Ministries.*" To those missionaries, those have done this. I thank you and I know your community thank you.

Our magazine, *The Missionary Messenger* is up to date and we thank you for your subscriptions and we thank our editor, Ms. Juliet Waddell, for a job well done.

RECOMMENDATIONS

1. That this report of the Women's Missionary Council of the Christian Methodist Episcopal Church be received and referred to the proper committee.
2. That the Women's Missionary Council continue the "*Here I Am Ministries*" with President Obama's My Brother Keeper Initiative as a plan of action.
3. That the Women's Missionary Council continue to support the Eula W. F. Harris Gift Fund, the Helena B. Cobb and P. Ann Pegues SOS (Save Our Sons) Scholarship and Grant Programs, Hunger and Meals for Millions, the Elnora P. Hamb Health Initiative, the Overseas Missions and Organization and Promotion Departments and all other projects that are required by the Constitution and by-laws of the Council.

4. That the Women's Missionary Council continues their Partnership with the Balm in Gilead," the African American Denominational Leadership Health Initiative.

5. That we establish a supportive prayer network in each Region. Each missionary is encouraged to pray for our youth, our communities, our families, our people, our church, our nation, and peace at 12:00 noon daily.

6. That each society establishes a mentoring program for young males and young girls.

7. That the Women's Missionary Council selects one of our CME's Colleges for sharing each year at our Executive Board and Quadrennial Assembly as a means of supporting our institutions of higher learning.

8. That we continue to commit ourselves to organize the Rossie T. Hollis, Mattie E. Coleman, and Phyllis H. Bedford Departments on all levels.

9. That a standing ovation be given to our host Bishop James B. Walker; the Host Church, Sidney Park CME, its pastor, Rev. Ian Spencer and members of

the Carolina Region and to the entire 7th Episcopal "District for hosting this Executive Board.

Our achievements and success are not rooted in ourselves. They are the product of God's matchless grace, upon which we are eternally dependent. I want to express my thanks to the College of Bishops, the Presiding Elders, Pastors, the Laity, missionaries and friends for the help and support you have given me on this journey and in the words of the great American author and poet, Maya Angelou, "I wouldn't take nothing for my journey now, and as the song writer says, "I don't know about tomorrow ...but, I know who holds tomorrow."

*If God Gives Me Strength And Courage
when The Way Grows Steep And Rough
I'll Not Ask For Other Blessings
I'm Already Blessed Enough
and May I Never Be Too Busy
to Help my beloved missionaries Bear Their
Loads
then **I'll Keep Drinking From My Saucer
" because My Cup Has Overflowed!***

God's blessings,
Princess Pegues
Dr. Princess Ann Rogers Pegues

The Women's Missionary Council

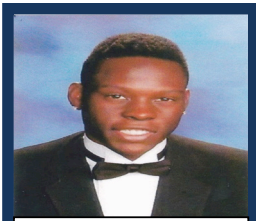
Christian Methodist Episcopal Church

Executive Board

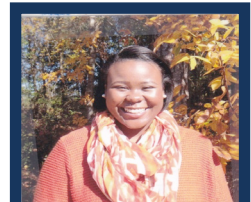
The Vice President's Report



Ms. Jacqueline I. Scott



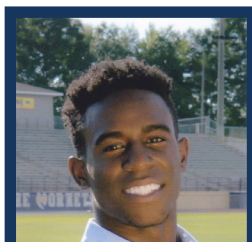
**7th Episcopal District
DeSean K. Little**



**6th Episcopal District
Nesheika K. Caleb**



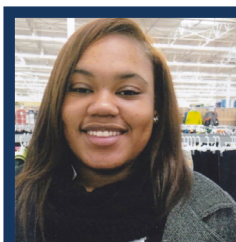
**1st Episcopal District
Sascha S. Young**



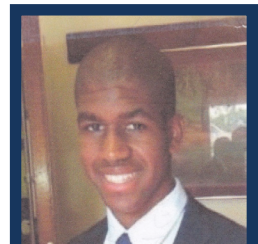
**6th Episcopal District
Christopher B. Miller**



**8th Episcopal District
Chaston L. Brooks**



**5th Episcopal District
LaBrenica G. Frazier**



**9th Episcopal District
Bryce Bentley**

“Investing in the Future through Education, Outreach and Service”

Dr. Princess R. Pegues
President

Bishop James B. Walker
Episcopal Patron

The Vice President's Report

*"The Lord is my light and my salvation; whom shall I fear?
The Lord is the strength of my life; of whom shall I be afraid?"*
Psalm 27:1

*I greet each of you in the "Omnipotent, Almighty,
All Powerful and Divine" name of our Lord and Savior.*

To: Senior Bishop, Lawrence L. Reddick III and Mrs. Wynde Jones Reddick, First Lady; Our International President, Dr. Princess Ann R. Pegues, Patron and Host, Bishop James B. Walker and Mrs. Delois Walker, Bishop Marvin Frank Thomas, Sr., Chair, College of Bishops, their wives and widows, Council Officers, Immediate Past President, Dr. Elnora P. Hamb, Past President, Dr. Judith E. Grant, Dr. Sylvia M. Faulk, President Emeritus, and Mrs. Lizzie Willis, Past Vice President, Executive Board Members, General Officers and their spouses, the Judicial Council, Connectional Officers, Heads of Educational Institutions, Clergy, Missionaries, Laity and Special Guests:

I give thanks to the Lord for each of you have truly blessed The Women's Missionary Council. You reached out so willingly and answered the call to support our Scholarship Program. It is such a wonderful blessing to have Regional Vice Presidents and Presidents that continue to do everything within their power to support The Helena B. Cobb and P. Ann Pegues (Save Our Sons) Scholarship Funds! I'm so grateful!

A good education gives individuals the practical knowledge to succeed in their profession of choice after landing a

job. It, also, allows individuals to expand upon their natural skills and talents and turn them into something greater. When a solid education is combined with experience, individuals can truly show their potential. In a highly competitive and globalized economy, higher education prepares members of each society to accomplish great feats and meet the challenges of the future.

The Journal of Blacks in Higher Education reports the following:

"Statistics on African American Males and Females"

At the time of the Harlem Renaissance in the 1920's, about 10,000 American Blacks - one in 1,000 - were college educated. Theodore Cross, the founder and editor of The Journal of Blacks in Higher Education was born in 1924, stated the following:

A Black child born that same year had about as much chance of completing four years of college as he had of playing shortstop for the Boston Red Sox.

Today the world is different. There are more than 4.6 million African Americans alive today who hold a four year college degree.

According to the U. S. Census Bureau, there are 3,215,000 Blacks in this country who have a Bachelor's Degree. There are an additional 1,078,000 African Americans who have both – a four year college degree and a Master's Degree. An additional 150,000 Blacks hold a Professional Degree in fields such as Law, Business and Medicine. Another 136,000 African Americans have obtained a Doctorate Degree. Over all, 4,579,000 African Americans possess a four year college degree or higher. This is breathtaking progress.

Today there are 2,670,000 Black women with a four year degree or better. Black women account for almost 58 percent of all the African Americans who have completed four years of college or more in our country.

Black men continue to have a lead over Black women in their numbers of professional degrees. Approximately 88,000 Black men have a professional degree

in the United States today compared to 62,000 Black women. Black women are closing the gap. Black men continue to hold the lead in doctorates but here too the gap is closing rapidly. Therefore, the overall gender gap in favor of Black men is likely to change in the near future.

Education is a must for a promising and secure future for our children and youth. "Knowledge is power. *Information is liberating. Education is the premise of progress, in every society, in every family.*" – Kofi Annan

I am extremely appreciative to all Vice Presidents on every level for your commitment and constant support and to all Missionaries throughout the Connection.

Humbly submitted,



Jacqueline I. Scott

"Education is not preparation for life; education is life itself."

– John Dewey

Helena B. Cobb Annual Scholarship Recipients 2015 - 2016

NAME	COLLEGE/UNIVERSITY
Adams, Malachi L.	Western Illinois University
Adams, Remesh Shemir	Spelman College *
Albert, Ralston J.	Miles College *
Allen, Candice L.	University of Louisiana - Lafayette
Ampomah, Kwasi F.	Muhlenberg College
Anderson, Jr., Ronza J.	Jackson State University *
Atwater, Natalee S.	Winston Salem State University *
Baines, James Howard	Columbia College - Chicago
Baines, Jamie J.	Chicago State University
Banks, Jermaya C.	Wiley College *
Barnes, Raven S.	Tyler Junior College
Barton, Kelsie C.	University of Memphis
Beasley, Mekenzie B.	Georgie Gwinnett College
Bennett, Jr., Errol A.	Ohio State University - Newark
Bentley, Jordan Scott	University of California - Irvine
Bethel, Brittany A.	University of Tennessee - Knoxville
Bias, Raquel Sheree	Macomb Community College
Blair, Brittany Nicole	Indiana State University
Blissett, Ti'Mia Lanitra	Mississippi State University
Boddy, Alexis Rose	Wichita State University
Bond, Helen Marie	Duke University
Borders, Courney N.	Georgia Career Institute
Bradley, Remon DeVaughn	Lane College *
Bradley, Robert	Schoolcraft College
Brasfield, Chelsea A.	Southern Union State Community College
Brasfield, Zachary K.	University of North Alabama
Brazil, Brajae C. M.	University of Tennessee - Knoxville
Brooks, Jakala Nicolette	University of Memphis
Brooks, Natron	Mississippi Valley State University *
Brooks, Tyshuneik	Monroe Community College
Brown, Erin R.	Lincoln University
Brown, Kaila L.	Lane College *
Brown, Zana Joelle	University of Detroit Mercy
Burns, Kayla Jenae	Rust College *
Burns, Keevah A.	Rust College *
Burton, Aaron J.	Thiel College
Burts, Shondrea M.	Wiley College *
Butler, Davion L.	Southern Illinois University
Campbell, Breanna D.	Columbus State University
Campbell, Quincy	Prairie View A & M University *

NAME

Capler, Mariah Fonzika
Carpten, Joya
Carter, Arthur J.
Chambers, Desiree
Chappell, Daniel
Chavous, Tavon
Church, Karissa Mia
Cole, Darius Jamil
Coleman, Ollie III
Coleman, Tia
Collier, Kiana Charane
Collins, Danielle Marnick
Coman, Precious S. M.
Combs, Kelsea
Conley, Asia J.
Cooper, Carlie Celine
Coppadge, Samantha L.
Crewshaw, Leslie M.
Darden, Jordyne Jaynae
Davis, KeDabrean D.
Davis, Lekesha B.
Delaine, Adriane Jerome
Dennis, Jasmine Desirae
Dickey, Alex
Dickey, Alfred
Dickson, Gabrielle Hope
Dorsey, Morgan Simonne
Douglas, Kyla A.
Dukes, Jacquelyn R.
Dukes, Joshua R.
Dunbar, Maria A.
Dupree, Isaiah Collier
Durham, Ramona Shavonne
Durr, Keenar Vizquel
Elliott, Elayne V.
Farris, Oliviyah Wilhemenia
Finnie, Danus M.
Fleming, Jr., Rodney Stevenson
Frazier, Ariana Yvonne
Frazier, Taneesha S.
Frelot, Breanna Julester
Gaddis, Julius Wanya
Garland, Johnnita M.
Gilliam, Lawrence James

COLLEGE/UNIVERSITY

Alcorn State University *
Middle Tennessee State University
University of Memphis
West Texas A & M University
Olive - Harvey College
Bethune Cookman University *
Kentucky State University *
St. Augustine University
Lindenwood University
Southern University A & M College *
Henry Ford Community College
Tarrant County College
Northwest Shoals Community College
Austin Peay State University
University of Tennessee - Knoxville
University of Michigan - Ann Arbor
Livingstone College *
Alabama State University *
Central Michigan University
Middle Tennessee State University
Shelton State Community College
Lane College *
University of Nevada - Las Vegas
Anderson University
West Virginia University
Augusta University/East Georgia Augusta Campus
Tennessee State University *
Tennessee State University *
Milwaukee Area Technical College
University of Wisconsin - Milwaukee
Florida State University
Mississippi State University
Washington University - St. Louis
Jackson State University *
Emory University
Georgetown University
University of Memphis
Georgia College and State University
Albany State University v
Tennessee State University *
Chabot College
Fox Valley Tech. College Oshkosh Riverside Campus
Texas Southern University *
Morehouse College *

NAME

Glover, Matthew Rob-Lloyd
Golson, Aaron Philip
Golson, Brian Anthony
Gordon, Chelsea Marie
Gordon, Courtney Michele
Graves, William H. III
Gray, Briana O'Sha
Gray, Jessica
Gray, Mikea A.
Green, Donte
Green, Jocelyn Lisette
Green, Jonathan Paul
Gregory, Ashley Latrice
Griffin, Jessica Patrice
Griffin, Tylynn F. J.
Hall, Jaleesa S.
Hamb, Raymond III
Hamilton, Cheri M.
Hamilton, Terrell D.
Harris, Ashli Elizabeth
Harris, Kourtlynn B.
Haskins, Byeishea Nicole
Haskins, Kadriion Terrill
Haynes, Tyler
Head, Justin Taylor
Helton, Candice Hope
Helton, Chloe Love
Henderson, Alexandria Yvonne
Henderson, Jordan Malin
Henderson, Jordan Rosalyn
Hester, Jordyn
Hicks, Alexis N.
Higgs, DeLeare K.
Hill, Ariel M.
Hill, Imani Zoe
Hill, Latonya
Hill, Yusheka
Hogg, Kyle Joel
Holbrook, Tavion Jeremiah
Hollington, Jeffrey Mark
Holmes, Robert Marcellus
Howard, Brandon Colin
Howard, Bryant Kaylan
Hoyt, Maya Christian

COLLEGE/UNIVERSITY

Alabama A & M University *
Claflin University *
Kennesaw State University
Georgia State University
Fort Valley State University *
Berkley College of Music
University of Tennessee - Knoxville
University of Arkansas - Little Rock, AR
Spelman College *
Lane College *
Millsap College
Northeast Mississippi Community College
Angelina College
Xavier University - Louisiana *
Tuskegee University *
Liberty University
Richard Daley College
North Carolina Central University
Lawson State Community College
University of Wisconsin - LaCrosse
Southern University A & M College *
Tarleton State University
Drexel University
Southern University *
University of Central Missouri
Trinity Washington University
University of North Carolina - Greensboro
Baptist College of Health Sciences
Vanderbilt University
University of Pittsburgh
Spelman College *
University of Houston
University of Memphis
Tennessee State University *
University of Michigan - Dearborn
Merritt College
Miles College *
Diablo Valley College
University of Tennessee - Knoxville
Keller Graduate School of Mgmt. San Jose Center
Eastern Michigan University
Lane College *
Tennessee State University *
Spelman College *

NAME

Hudson, Devin N.
Hughes, Donovan J.
Idhe, Calarie Lovree
Jackson, Clifton
Jackson, Jazmyn R.
Jackson, Joshua
Jelks, Terihana Yvonne
Jeti, Panashe
Jimenez, Monica A.
Johnson, Amber Shunta
Johnson, Cheryl Lorraine
Johnson, Diamond Denise
Johnson, Jakayla J.
Johnson, Jelani Issa
Johnson, Jordan Tyler
Johnson, Katlyn Madison
Johnson, Kennon Ivory
Johnson, Nailah Amadi
Johnson, Quintara Chalé
Johnson, Robreana H.
Jones, Aerial N.
Jones, April
Jones, Kiera S.
Jordan, Taylor Gwen
Kelly, Leanne Simone
King, Amani Reneé
Kirven, Marley Joan
Kirven, Sydney Jae
Lang, Shania Jasmine
Larkins, Jeremiah Raymond
Lesure, Sierra Nicole
Lewis, Arielle Avita
Lindsay, Sydney M.
Lloyd, Carla
Lockett, Jillian T.
Love, Belynda
Lowe, Kyana Quashae
Lowery, Jackie
Martin, Athena T.
Martin, Barry Zachary
Martin, Chancellor B.
Martin, Marissa Rashuard
Martin, Tiana
Massey, Jr. Michael

COLLEGE/UNIVERSITY

Truman State University
Western Michigan University
Jackson College
University of Memphis
Laguna College of Art & Design
LA Tech - Louisiana Tech University
Union University
Miles College *
Alverno College
University of Memphis
Grand Canyon University
Grand Valley State University
Northwest Mississippi Community College
Marquette University
Morehouse College *
Jacksonville State University
Jackson State Community College
Marquette University
Grambling State University *
Albany State University *
Alabama A & M University *
Southwest Tennessee Community College
Alabama A & M University *
Western Michigan University
Texas State University
Lincoln University - Missouri *
Buffalo State University - New York
Xavier University of Louisiana *
Xavier University of Louisiana *
University of Louisiana - Lafayette
Blue Mountain College
The University of Alabama
Winston Salem State University
Western Michigan University
Dillard University *
Texas Woman's University
Alabama State University *
Lincoln University
College of San Mateo
Stephen F. Austin State University
Kennesaw State University
Southern University - Baton Rouge *
Spelman College *
University of Tennessee - Knoxville

NAME

McBride, Nazjah Nicole
McClaine, Kellie
McCrary, Almeer
McDuffie, Julian Scott
McHenry, Haley Alese
McKinney, Patraná V.
McLean, Viasia Queniece
Medlock, Mariah S.
Medlock, Morgan D.
Miller, David Lee II
Mitchell, Drexel Normal
Morman, Shana C. H.
Morris, Andrea Gail
Morris, Jalen Armani
Moulder, Alcodia Dari
Mumphrey, Jhayla S.
Murrell, Ashley Nicole
Nixon, Mikaela Regine
Nnaji, Christine
Nnaji, Gloria Ihuoma
Odunleye, Akintunde
Oladele, Solomon
Oliver, Courtney Kay
Parham, Angela Denise
Parker, Leon Tyshaun
Patton, Justice
Pegues, Antonius
Pegues, Micah
Perry, Simone Nicole
Persons, Ricky Allan
Phillip, Kiara
Phillips, Porsha S.
Pinckney, Tevien C.
Powell, Eraniquá L.
Powell, LaTarrius
Price, Moné Elaine
Pulliam, Alexis N.
Quinn, D’Nashia Davalyai
Rahman-Smith, Vernae Cortina
Randle, Jamari Anthony
Ratcliff, Bryce Lewis
Revels, Talvin Reyshon
Reynolds, Tariah Marnese
Rivers, Jonathan Rashad

COLLEGE/UNIVERSITY

Western New Mexico University
Oakland Community College
University of Memphis
Miles College *
Tougaloo College *
Southwest Community College
Augusta Technical College
University of West Georgia
University of West Georgia
Lincoln University *
Wesley Theological Seminary
Columbus State University
Bradley University
Oakland Community College
Paine College *
Texas Tech University
University of Tennessee – Knoxville
Virginia Union University *
Penn State University
Trinity Washington University
University of Missouri – Columbia
Benedict College *
DePauw University
Alabama A & M University *
Victor Valley Community College
North Texas State University
Southern University A & M College *
Southern University A & M College *
Howard University *
Tuskegee University *
Collin Community College
University of Memphis
Western Illinois University – Quad Cities
Freed Hardeman University
Miles College *
Chicago State University
Tuskegee University *
The University of Southern Mississippi
Howard University *
Clark Atlanta University *
Grambling State University *
Louisiana State University – Shreveport
Gadsden State Community College
Middle Tennessee State University

NAME

Rivers, Kenya L.
 Robinson, Michelle Sulaina
 Robinson, Terrell H.

Ross, Joy E.
 Rossi, Scherraque Avonnee
 Sanchez, Antonio
 Scott, Celeste Monet
 Scott, Jr., Ronald Curtis
 Scott, Stanley Richard
 Shaw, Breon Marcel
 Shaw, Richard D.
 Shaw, Trentyn M.
 Shipp, Devonta L.
 Smith, Andare Chase
 Smith, Roderick
 Smith, Timothy Elijah
 Sommerville, Symone Barbara
 Spencer, Stacey
 Spencer, Stephany
 Spraggins, Laquanna
 Stafford, Mariah Demione
 Stevenson, DeAndre
 Stewart, Danyelle Brenaé

Stewart, Jazmine Myesha
 Stewart, Peaches C.
 Tarrant, Aaron M. L.
 Taylor, Alexis Charnay
 Thomas, Brianna D.
 Travillian, Jillian P.
 Trice, Portia Rachelle
 Tucker, Markeisha Lanae
 Tucker, Meagan Arlyse
 Turner, Russell Jerrod
 Upshur-Benson, Asante Steven
 Vaulx, Marshall Nicholas
 Walker, Glenda G.
 Walters, Donté Philip
 Ward, Quinton P.
 Washington, Denzel J.
 Washington, Kendrick Austin
 Webb, Brandon A.
 Webb, Jade Deyeé

COLLEGE/UNIVERSITY

Lawson State Community College
 Kent State University
 The Omega Studios' School of Applied
 Recording Arts and Sciences
 Oakland Community College
 California State University-Dominguez Hills
 City College of San Francisco
 San Diego State University
 Hampton University *
 City College of San Francisco
 Middle Tennessee State University
 Alabama State University *
 Alabama State University *
 Mississippi Valley State University *
 University of Georgia
 Washington University - St. Louis
 Appalachian State University
 Georgia Southern University
 North Carolina A & T State University *
 Livingstone College *
 University of Michigan
 Sam Houston State University
 Jackson State University *
 University of Arkansas Community College
 at Hope - Texarkana
 University of North Carolina - Greensboro
 Florida State College - Jacksonville North Campus
 Collin County Community College
 Northwestern State University
Paine College *
 Jackson State University *
 University of Missouri - Kansas City
 Northeast Mississippi Community College
 University of Louisiana - Lafayette
 Tennessee State University *
 Millersville University
Lane College *
 Apex School of Theology
 University of Kansas
 Webster University
 University of Tennessee - Chattanooga
 University of Alabama - Birmingham
 Wilberforce University *
 Univ. of Texas Southwestern Medical Center

NAME

Wells, Christina E.
Wells, Raiven L.
Whitaker, Carl J.
Wilder, Tyasha Elisa
Williams, Charles B. III
Williams, Janai Angelique
Williams, Jayde Alicia
Williams, Lavisha S.
Williams, Masai M.
Williams, Shalom T.
Willis, Markeshia Carolyn
Wilson, Milik R. S.
Windom, Kevon J. G.
Wood, Tyelar O'Neal
Woods, Shamar Ervin
Wright, Courtney Ann
Wright, Jasmine J.
Wright, Kierra Rubionne
Wyatt, Alexander Jordan
Wynn, Jamisha E.
Yancy, Jr., Clifton R.

COLLEGE/UNIVERSITY

Western Michigan University
Lane College *
Ottawa University
Lincoln University
Miles College *
Southwest Tennessee Community College
The University of Oklahoma
Duke University
Florida State College - Jacksonville
Metropolitan Community College
Texas State University
Lane College *
Lane College *
Navarro College
Rust College *
Oklahoma State University - Stillwater
Broward College
Central Michigan University
Sam Houston State University
Tennessee State University *
Jackson State University *



*"Every child has a different learning style and pace.
Each child is unique, not only capable of learning but also capable of succeeding."*

- Robert John Meehan

SUMMARY OF ANNUAL SCHOLARSHIP

Bold print indicates students attending CME Colleges.....	16
Asterisks indicate students attending *HBCUs	77
Students attending other Colleges/Universities	184
Students attending Phillips School of Theology or other Seminaries	3
Total Scholarships Awarded.....	280

A total of \$77,400.00 was given in Scholarships to aid students with their college tuition.

***Historically Black Colleges and Universities (HBCUs)**

HBCUs have made great strides in providing educational opportunities for African Americans. Federal law (20 USCS 1061) defines historically Black colleges and universities as institutions of higher education “whose principal mission. . . is the education of Black Americans.” Although providing higher education opportunities for African Americans has been the primary goal of these institutions, they have enrolled and graduated many students, regardless of their race, ethnicity, or income level.

“Education is the passport to the future, for tomorrow belongs to those who prepare for it today.”

—Malcolm X

PRESIDENTS/VICE PRESIDENT'S FINANCIAL REPORT JANUARY, 2017

EPISCOPAL DISTRICT	REGION	PRESIDENT	VICE PRESIDENT	2016 H. B. COBB	2016 P. ANN PEGUES SOS	TOTAL
FIRST Bishop Henry M. Williamson, Sr.	West Tennessee	Sheila Holman	Juanita Mitchum	1,550.00	1,170.00*	2,720.00
	East Tennessee	Virginia J. Boyd	Martha Upshur- Merriweather	1,800.00	500.00	2,300.00
	Arkansas	Virgie G. Phillips	Jimmie White	1,700.00	500.00	2,200.00
SECOND Bishop Marvin Frank Thomas	Ohio/Central Indiana	Phyllis A. Tyler	Anita Kellon	0.00	0.00	0.00
	Kentucky	Vicki S. Rogers	Wanda Morrow	1,000.00	500.00	1,500.00
THIRD Bishop Sylvester Williams, Sr.	Kansas/Missouri	Liz Bishop	Margaret Pender	565.00	0.00	565.00
	Michigan/Indiana	Terry Alexander	Kathryn Blake	3,121.00	1,300.00	4,421.00
	S.E. MO/Illinois/WI	Marguerite Guy	Frankie Loving	2,632.00	653.50	3,285.50
FOURTH Bishop Thomas L. Brown, Sr.	Louisiana	Jackie T. Wagner	Bonita Black	1,100.00	600.00	1,700.00
	South Louisiana	Rose Locksey	Ruby D. Silas	1,500.00	600.00	2,100.00
	N. E. Mississippi	Ardelia Briggs	Sharon W. Bowdry	2,000.00	500.00	2,500.00
	Mississippi South	Terisa McQueen	Sylvia Carter	1,190.00	1,150.00	2,340.00
FIFTH Bishop Teresa Snorton	North Cen. Alabama	Isola Lark	Julia Carter	1,510.00	600.00	2,110.00
	South East Alabama	Emogene Crittenden	Marie Johnson	1,534.00	665.00	2,199.00
	Birmingham	Geraldine Odum	Mary Thompson	0.00	0.00	0.00
	Florida	Brenda Buie	Deborah L. Dickenson	0.00	0.00	0.00
SIXTH Bishop Kenneth W. Carter	Georgia North	Betty Christian	Hilda Stuckey	4,350.00	500.00	4,850.00
	Central Georgia	Calandra F. Hunter	Adeline Felton	2,500.00	1,000.00	3,500.00
	South Georgia	Gloria Cook	Nylon Davis	1,000.00	500.00	1,500.00
	West Georgia	Linda Bowens	Brenda Wise	0.00	0.00	0.00
SEVENTH Bishop James B. Walker	Carolina	Adrienne C. Speas	Carolyn Stafford	2,464.00	700.00	3,164.00
	New York/Washington	Sandra R. Chambers	Wanda Glass	3,200.00	1,200.00	4,400.00
EIGHTH Bishop L. L. Reddick III	Central Texas	Debra Wickware	Pamela Wilson	0.00	0.00	0.00
	Dallas/Ft. Worth	Dorothy L. Johnson	Gloria J. Craig	1,200.00	500.00	1,700.00
	East Texas	Crystal D. Lewis	Diana Hardiman	2,000.00	500.00	2,500.00
	North West Texas	Isis Wiley	Pauline Davis	0.00	0.00	0.00
	South East Texas	Linda Woolage	Joyce Johnson	5,000.00	500.00	5,500.00
NINTH Bishop Bobby R. Best	Alaska/Pacific	Stephanie Dedmond	Jennie Stephens	200.00	100.00	300.00
	Arizona/New Mexico	Tanda L. Meadors	Rosemary Hill	500.00	500.00	1,000.00
	Northern California	Elretha Scott	Verna McCalister	1,200.00	400.25	1,600.25
	Oklahoma	Emma J. Reagor	Monique R. Varner	1,630.00	850.00	2,480.00
	Southern California	Wanda Thomas	Renee Woodruff	0.00	0.00	0.00
TOTAL PRESIDENTS AND VICE PRESIDENTS' REPORT				46,446.00	15,988.75	62,434.75

In Memory of:

Mrs. Melissa Fox \$200

(Mrs. Doris F. Boyd's Mother)

Given to the West TN Region SOS*

Mrs. Montine Webb \$500

(Ms. Juliette Wadlington & Ms. Jacqueline I. Scott's Sister)

Given to the West TN Region SOS**

Helena B. Cob \$46,446.00

P. Ann Pegues (SOS) 15,988.75

Grand Total \$60,434.75

Apple Region Awards



Golden Apple Award (\$3,000 up)

E.D.	Region	President	Vice President	Amount
Eighth	South East Texas	Linda Woolage	Joyce Johnson	5,500.00
Sixth	Georgia North	Betty Christian	Hilda Stuckey	4,850.00
Third	Michigan/Indiana	Terry Alexander	Kathryn Blake	4,421.00
Seventh	New York/Washington	Sandra R. Chambers	Wander Glass	4,400.00
Sixth	Central Georgia	Calandra Hunter	Adeline Felton	3,500.00
Third	S.E. MO/Illinois/WI	Marguerite Guy	Frankie Loving	3,285.50
Seventh	Carolina	Adrienne C. Speas	Carolyn Stafford	3,164.00



Red Apple (\$1,700 - \$2,999)

E.D.	Region	President	Vice President	Amount
First	West Tennessee	Sheila Holman	Juanita Mitchum	2,720.00
Fourth	N. E. Mississippi	Ardelia Briggs	Sharon W. Bowdry	2,500.00
Eighth	East Texas	Crystal D. Lewis	Diana Hardiman	2,500.00
Ninth	Oklahoma	Emma J. Reagor	Monique R. Varner	2,480.00
Fourth	Mississippi South	Terisa McQueen	Sylvia Carter	2,340.00
First	East Tennessee	Virginia J. Boyd	Martha Upshur-Merriweather	2,300.00
First	Arkansas	Virgie G. Phillips	Jimmie White	2,200.00
Fifth	South East Alabama	Emogene Crittenden	Marie Johnson	2,199.00
Fifth	North Cen. Alabama	Isola Lark	Julia Carter	2,110.00
Fourth	South Louisiana	Rose Locksey	Ruby D. Silas	2,100.00
Fourth	Louisiana	Jackie T. Wagner	Bonita Black	1,700.00
Eighth	Dallas/Ft. Worth	Dorothy L. Johnson	Gloria J. Craig	1,700.00

“Education is the most powerful weapon which you can use to change the world.”

— Nelson Mandela

Helena B. Cobb Higher Education

(Four Year) Scholarship Recipients

2015 - 2019 Winners

"Chatting with Students"



Nesheika Kallimah Caleb

Oglethorpe University • Atlanta, Georgia

I am in my sophomore year at Oglethorpe University in Atlanta, GA and majoring in Human Resources Management. While I was involved in many activities in my freshman year, I continue to do so in my sophomore year. I am still involved on the Programming Board where I plan different events for the whole study body and I am now the Public Relations Chair for Students Today, Alumni Tomorrow where we, also, host different events for alums and students to meet and network. I am, also, a part of the Black Students Caucus and Black and Gold Club which works directly with the Office of Admissions. I got accepted into the Business Leadership Fellowship Program which is a highly selected career development program for business students here at Oglethorpe

University. While focusing on my grades and being involved on campus, I am striving to be the best I can be with the help of the Lord. Nesheika is a member of the Sixth Episcopal District.



Sascha Young

University of Memphis • Memphis, Tennessee

I am a Psychology Major. My GPA is 3.79. My current job is Resident Assistant for University of Memphis. The job requires me to be resource for people who live on campus to help with anything they may need regarding housing or personally. I host programs as well as deal with serious incidents that may occur. On February 26, 2017, I will be participating in a beauty pageant in hopes of becoming Ms. Delta Nu (Miss Phi Beta Sigma). I am a cheerleading coach for the Cheer Team at Kirby High School. Overall, I'm doing well and I appreciate your concern. Thank you so much and please continue to keep me in your prayers. Sascha is a member of the First Episcopal District.



Chaston L. Brooks

Lamar University • Beaumont, Texas

Attending Lamar University has been an amazing opportunity. Playing college football and attending class every day has become a full workload. However, it has been a great learning experience. I've learned how to prioritize and manage football, school, and a social life. Now, it is a breeze. I am enjoying college life, taking advantage of the endless possibilities and looking forward to a great future. In all, utilizing everything I have been taught from home, family, friends and my Post Oak church family, I have been able to keep a level head and not fall into the wrong crowd. I have kept God in my life and I use Him as guidance every day. Again, I owe a very special thanks to Ms. Scott and the Helena B. Cobb Four Year Scholarship award. Chaston is a member of the Eighth Episcopal District.



LaBrenica Frazier

Alabama State University • Montgomery, Alabama
LaBrenica is a member of the 5th Episcopal District.

Women's Missionary Council **Helena B. Cobb Scholarship**

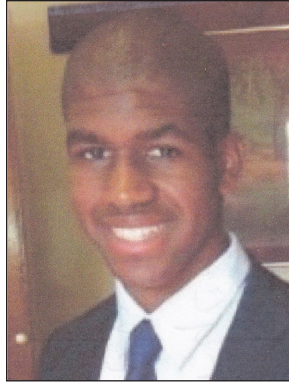
Dear Ladies of The Women's Missionary Council:

I am writing this letter to update you on my accomplishments since I received the Helena B. Cobb Scholarship. I am very happy and appreciative to have been one of the recipients for this scholarship. It has been a major help for me throughout my college career. I am now ending my first semester as a Sophomore. This has been a more challenging semester because I am getting out of my general studies courses and starting my Education courses. I am, also, now prepping to take the Alabama Educator Certification Testing Program Exam. This exam is one of the many exams Education Majors must take to graduate. I am, also, starting my observation hours at different elementary schools, putting one step closer to graduating and becoming a teacher. I am jumping over my first hurdle as an Elementary Education Major.

As the semester is coming to an end, I am continuously striving to maintain and raise my GPA. I have all A's and B's in my classes. To be accepted into the Education Program at Alabama State University, you have to maintain a 3.0 GPA and I'm striving to go even higher than that. This school year has been full of surprises but the best one was when I received another scholarship helping me to further my education. I received this scholarship through the school and it is called the Trust Scholarship. This semester has been wonderful and I owe it all to God. I just want to thank you all again for the major contribution to my education.

Sincerely,

LaBrenica Frazier



Bryce Wayne Bentley
University of California-Los Angeles • Los Angeles,
California

Bryce is a member of the Ninth Episcopal District.

Bryce Bentley's College Progress Report (11/17/16)

My first year in college went very well. I was able to enter my second year with a 3.46 GPA.

My current goal is to achieve a 3.55 GPA by the end of the school year. I am

predominantly

involved in three organizations: the Watts Tutorial Program (WTP), the African Educational Project (AEP) and the Black Hypertension Project (BHP).

For WTP, members offer students living in the city of Watts to get one on one tutoring with their homework and basic subjects such as Reading Comprehension and Math. I tutor an 11th Grade student and occasionally have discussions on what are her academic and career aspirations.

For AEP, volunteers visit a predominantly Black community and host workshops for the children in the neighborhood. Our aim is to build their self-confidence, raise their awareness of social issues and educate them about race as it pertains to culture, history and self-identity.

The BHP's main objective is to spread the knowledge and effects of hypertension. Hypertension is the condition of having a blood pressure that is high enough to pose serious health effects. According to statistics, high blood pressure is most commonly found in Black Americans and is responsible for thousands of deaths each year. To combat this, the organization attends health fairs where we check the visitors' blood pressure and let them know what the numbers mean. I volunteered at my first site on November 6th. We plan to attend more health fairs and go to elementary and high schools to spread awareness to children and teenagers.

Academically, I decided to challenge myself this quarter. I am currently taking Organic Chemistry, Intro to Psychology, Physics (mechanics and kinematics) and Biology related to cells, tissues and organs. Although they are all very demanding in terms of time commitment, I am enjoying them and performing well. My goal this quarter is to receive at least 3 A's and 1 B on my transcript.

In conclusion, I feel well adapted to college lifestyle. I learned how to manage my time and study efficiently. I have, also, surrounded myself with individuals who are dedicated to their academic performances as well. As I continue to build confidence in my own abilities, I plan to seek out more organizations pertaining to medicine and health. My hope is to build up my résumé by the time I send my next progress report. Thank you for continuing to support me and my education. I am always grateful to know that there are people who have faith in my abilities. Thank you and God Bless!

Sincerely,

Bryce Bentley

P. Ann Pegues Save Our Sons

Four Year Scholarship Recipients

2015 - 2019 Winners

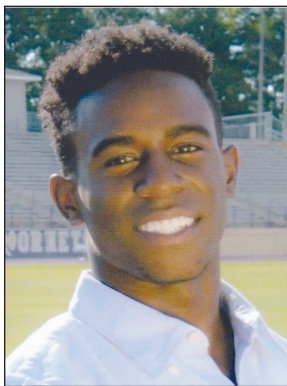
"Chatting with Students"



DeSean K. Little

**North Carolina Agricultural & Technical State University
Greensboro, NC**

This semester has been pretty well. I have had some trouble with materials in my Science and Physics classes but I'm more than positive that with perseverance I will get through this school year and continue striving to make every one proud. I look forward to hearing from you, Ms. Scott. DeSean is a member of the Seventh Episcopal District.



Christopher Miller

**University of Tennessee Chattanooga
Chattanooga, Tennessee**

I would like to thank the Women's Missionary Council for all they have done for me with helping me receive the P. Ann Pegues (Save Our Sons) Scholarship. I am thankful that it was given to me because it is helping me become a disciplined young male. At the University of Tennessee at Chattanooga, football is the only organization I am involved in so far. I am loving my college experience for it is going great and I thank you, the Women's Missionary Council, for making it possible for me. Thank you so much. Christopher is a member of the Sixth Episcopal District.



**Empowerment
Through Education**

*Living A Dream,
Building A Future*

Dear The Women's Missionary Council:

Thank you very much for selecting me to be the recipient of your scholarship. By me receiving this scholarship, it shown me that people see my potential and are willing to invest in me. It was greatly appreciated and it gave me a sense of pride because no one from my church has ever received an award like this before and I hope it inspires upcoming youth of my church to want to do the same. As I continue this transition into this new phase of my life, I am excited to be attending the University of Alabama at Birmingham again this year, and I look forward to making everyone proud of me one day. Please keep me in your prayers throughout my journey, as support is instrumental in my success. Thanks again for your help.

Sincerely,

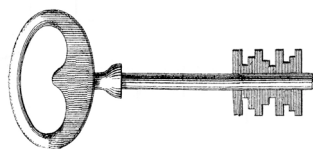
Kendrick Washington



Recommendations

1. That we continue to award annual scholarships to high school graduates each year and every society should support our Helena B. Cobb Scholarship Fund with observances on or near the second Sunday in January. **All funds raised by this observance should be mailed to the Council's treasurer and a copy of the payment be mailed to the Council's Vice President.**
2. That each Region Vice President of the Women's Missionary Society shall forward application forms for the Helena B. Cobb Annual Scholarship Grant to the Council Vice President no later than January 20th of each year.
3. That we continue to present the Helena B. Cobb Higher Education (Four Year) Scholarship Program with competition beginning on the local level in 2016, District 2017, Region 2018, Episcopal and Quadrennial 2019 levels and the P. Ann Pegues Save Our Sons (SOS) Higher Education (Four Year) Scholarship Program follows the same procedures.
4. **That all funds raised for the Helena B. Cobb Scholarship Programs must be reported by January 20th of the calendar year in order for credit to be given to respective Regions.**
5. That each Region contributes at least \$1,000.00 to our Helena B. Cobb Program and also contributes \$500.00 each year to our P. Ann Pegues SOS Scholarship Program.
6. **That missionaries on each level encourage their youth to attend our CME Colleges and/or one of our Historically Black Colleges or Universities.**
7. **That each student notifies the Council Vice President immediately if there is a change in the college or university they listed on their application (Annual and Four Year).**

*"Education is the
freedom."*

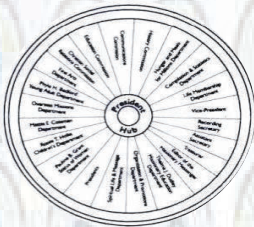


*to unlock the golden door of
-----George Washington Carver*

Women's Missionary Council Executive Board Meeting 2017 Editor's Report



JULIET WADDELL, EDITOR



*“Investing in the Future through
Education, Outreach and Service”*

*Columbia Marriott Hotel
Columbia, South Carolina
February 3 – February 7, 2017*

*Dr. Princess Ann Pegues, International President
Bishop James B. Walker, Patron and Host Bishop
Bishop Lawrence L. Reddick, III, Senior Bishop*

The Editor's Report

To: International President Dr. Princess A. Pegues, Senior Bishop Lawrence L. Reddick, III, Patron and host Bishop James B. Walker, my Bishop, Henry M. Williamson, Sr. and Dr. Doris Williamson, the College of Bishops, their wives and widows, Council Officers, Immediate Past President, Dr. Elnora P. Hamb, Past President, Dr. Judith E Grant, President Emeritus, Dr. Sylvia M. Faulk, Executive Board Members, General Officers, Judicial Council, Connectional Officers, Clergy, Missionaries, Laity and guests.

I greet you in the name of our Lord and Savior, Jesus Christ!

*Giving thanks always for all things unto God and the Father in the name of our Lord Jesus Christ.
Ephesians 5:20*

It is with much pleasure that I submit my second Executive Board report as your editor. My most sincere thanks to my missionary sisters for the support you have given by submitting articles, subscribing, gifting subscriptions, encouraging the editor and praying for *The Messenger*. Special thanks to Dr. Clarence Heath for his newly added article to *The Missionary Messenger*. A very special thanks to the bishops, retired bishops and their spouses for responding to my requests.

Thanks so much to the ladies who assist me, Mrs. Doris F. Boyd, Mrs. Dorothy P. Newman, Mrs. Letha G. Reed and Mrs. Wanda Cole Mason. Every month they work with me to produce quality articles with an appealing look. Lastly, thanks so very much to all who subscribe, clergy, lay and missionaries.

My vision for the magazine is growth in substance, growth in subscriptions and being the very best it can be. The means to achieve these goals see the following:

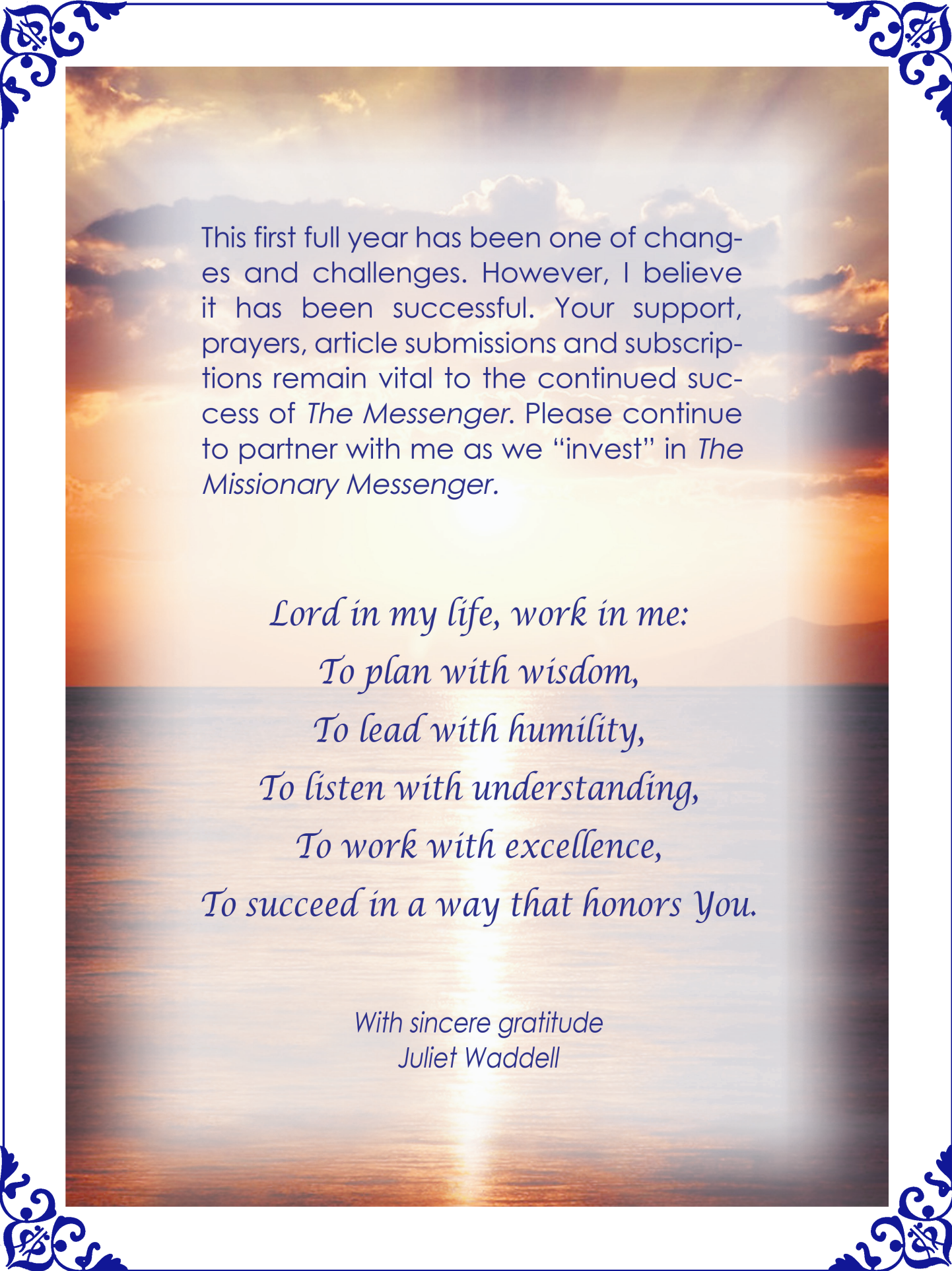
- To receive at least two articles from each region each year
- To feature articles promoting and highlighting our children, youth and young adults
- To offer incentives to the regions with the highest percentage increase in subscriptions from now until the next Executive Board Meeting

*Make a joyful noise to the Lord, all the earth!
Psalm 100:1*

The Missionary Messenger can celebrate the following accomplishments.

- *The Missionary Messenger* is being published monthly
- The Statement of Ownership was filed with the United States Postal Service and was published in the November, 2016 issue
- Purged the mailing list of all subscribers who had not paid since August, 2014
- That every region now have subscribers

*Commit your works to the Lord, and your thoughts will be established.
Proverbs 16:3*



This first full year has been one of changes and challenges. However, I believe it has been successful. Your support, prayers, article submissions and subscriptions remain vital to the continued success of *The Messenger*. Please continue to partner with me as we “invest” in *The Missionary Messenger*.

*Lord in my life, work in me:
To plan with wisdom,
To lead with humility,
To listen with understanding,
To work with excellence,
To succeed in a way that honors You.*

*With sincere gratitude
Juliet Waddell*

Messenger Subscription Report by Regions July – November 15, 2016

First Episcopal District

Arkansas Region 73

East Tennessee Region 37

West Tennessee Region 180

Second Episcopal District

Kentucky Region 35

Ohio-Central Indiana Region 49

Third Episcopal District

Kansas-Missouri Region 29

Michigan-Indiana Region 54

Southeast Missouri,
Illinois & Wisconsin Region 116

Fourth Episcopal District

North-East Mississippi Region 96

Mississippi-South Region 84

Louisiana Region 68

Fifth Episcopal District

Birmingham Region 44

North Central Alabama Region 62

Southeast Alabama Region 88

Florida Region 30

Sixth Episcopal District

Central Georgia Region 23

Georgia North Region 51

South Georgia Region 31

West Georgia Region 24

Seventh Episcopal District

Carolina Region 100

New York-Washington Region 58

Eighth Episcopal District

Central Texas Region 55

Dallas-Fort Worth Region 91

East Texas Region 79

Northwest Texas Region 23

Southeast Texas Region 52

Ninth Episcopal District

Alaska-Pacific 18

Arizona-New Mexico 22

Northern California 48

Oklahoma-Muskogee 24

Southern California 60

Total 1804

ARTICLE COMPOSITION TEMPLATE

Who What society or other group e.g. Church Women United

What Type program e.g. service project, activity or workshop

When Date of program

Where Church, or other venue, and the city and state

Why Training, service, fund raiser, etc.

How Details of program or how project was done

Highlight Anything special that everyone should know

Other ✓✓ Double check *names*; provide a *title* for the article; provide the *writer's name/position*

ARTICLE SUBMISSION

For articles submitted by email, software **MS Word** and Please send documents in the recommended format.

DOCUMENTS SENT IN PDF WILL BE RETURNED TO THE SENDER.

Pictures – sent electronically format separately and with the document Jpeg format or the original picture

Please submit articles by the 1st of each month

Email – julietwaddell@yahoo.com

SCHEDULE FOR ARTICLE SUBMISSIONS

2017 Calendar

April, 2017 – Kentucky; Alaska-Pacific; East Texas

May, 2017 – North-East Mississippi; Carolina;
Northern California

June, 2017 – Central Texas; Birmingham; East Tennessee

July/August, 2017 – Central Georgia; Kansas-Missouri;
Southern California

September, 2017 – Arkansas; Ohio-Central Indiana; Florida

October, 2017 – Michigan-Indiana; Mississippi South;
West Georgia

November, 2017 – North Central Alabama; North Georgia;
Northwest Texas

December, 2017 – New York-Washington; Oklahoma-Muskogee

January, 2018 – Arizona-New Mexico; West Tennessee;
Dallas Fort Worth

February, 2018 – Southeast Missouri, Illinois & Wisconsin;
Louisiana

March, 2018 – Southeast Alabama; South Georgia; Southeast Texas



RECOMMENDATIONS

- ✓ 1. That an article be submitted annually by our Council committee chairs and departmental secretaries
- ✓ 2. That each region submit two articles annually
- ✓ 3. That all will work to increase subscriptions to 5,000 by 2018
- ✓ 4. That subscription payments be submitted via one region check (as stated in the handbook) Please do not send **MULTIPLE CHECKS**
- ✓ 5. That the editor be notified as soon as possible of any address changes or corrections
- ✓ 6. Please send documents in the recommended format. Documents sent in PDF will be returned to the sender.
- ✓ 7. That each region assign a reporter for The Missionary Messenger

Questions Please Contact:



Your Editor

(901) 489-3845

JULIETWADDELL@YAHOO.COM

**JULIET WADDELL,
P. O. Box 241954,
MEMPHIS, TN 38124**





*Women's Missionary Council
Of the
Christian Methodist Episcopal Church*



TREASURER'S REPORT

2017 Executive Board Meeting

February 3 – 7, 2017

**Columbia Marriott Hotel
Columbia, South Carolina**

**Carol Ferrell, Treasurer
Dr. Princess Pegues, President
Bishop James B. Walker, Patron Bishop
Bishop Lawrence L. Reddick III, Senior Bishop**

“Investing in the Future through Education, Outreach and Service”

**EXECUTIVE BOARD 2017
REPORT OF THE TREASURER**

To President Dr. Princess A. Pegues, Senior Bishop Lawrence L. Reddick, III, Patron Bishop James B. Walker, host Bishop James B. Walker, the distinguished College of Bishops and their spouses and widows, Council Officers, Immediate Past President, Dr. Elnora P. Hamb, Past President, Dr. Judith E. Grant, President Emeritus, Dr. Sylvia M. Faulk, Executive Board Members, General Officers, Judicial Council, Connectional Officers, Clergy, Laity, Missionaries and all of God's children.

I greet you in the name of our Lord and Savior Jesus Christ.

I am pleased to bring you a financial account of the Women's Missionary Council of the Christian Methodist Episcopal Church for the year 2016.

In accordance with our bylaws, my records were submitted at the end of the fiscal year, December 31, 2016 to the Certified Public Accountant, Selwyn Blanchard. However, due to our meeting being early this year, there was not enough time to complete an audit, so Mr. Blanchard has provided a review of my records. The report is available for your review.

This report includes the following: Statement of Assets, Statement of Revenue and Statement of Expenses for the year ended December 31, 2016 and Region Asking Summary Report for 2016-2017.

My prayer is that you will continue to financially support the Council mission and programs and I thank you for the opportunity to serve.

Humbly submitted,

Carol Ferrell

Carol Ferrell, Treasurer
Women's Missionary Council

**CHRISTIAN METHODIST EPISCOPAL CHURCH
WOMEN'S MISSIONARY COUNCIL
STATEMENT OF ASSETS, LIABILITIES, AND NET ASSETS - CASH BASIS
December 31, 2016**

ASSETS

Cash		
General Operation	\$	26,306
Mission Outreach		120,917
Missionary Messenger		17,381
Scholarship Education		75,774
Special Account		41,647
Total Cash		282,025
TOTAL ASSETS	\$	282,025

LIABILITIES

\$ -

NET ASSETS

282,025

TOTAL NET ASSETS

\$ 282,025

**CHRISTIAN METHODIST EPISCOPAL CHURCH
WOMEN'S MISSIONARY COUNCIL
STATEMENT OF SUPPORT, REVENUE, AND EXPENSES - CASH BASIS
FOR THE YEAR ENDED DECEMBER 31, 2016**

REVENUES

General Church Allocation	\$ 48,000
Scholarship	116,463
Council Asking	88,393
Stoles	14,207
Life Membership	700
Scholarship Refund	1,800
Missionary Messenger	37,144
Organization and Promotion	4,777
Literature and Publication	1,360
Executive Board 2016	83,380
Executive Board 2017	14,871
Refund	5,148
Other Revenues	2,112
Total Revenues	<u>418,354</u>

Expenses	484,784
-----------------	---------

Total Expenses	<u>484,784</u>
-----------------------	----------------

Change in Net Assets	<u>(66,430)</u>
-----------------------------	-----------------

Net Assets as of January 1, 2016	348,455
----------------------------------	---------

Beginning Net Assets as Restated	<u>(66,430)</u>
----------------------------------	-----------------

Net Assets - End of Year	<u><u>\$ 282,025</u></u>
--------------------------	--------------------------

**CHRISTIAN METHODIST EPISCOPAL CHURCH
WOMEN'S MISSIONARY COUNCIL
STATEMENT OF EXPENSES - CASH BASIS
FOR THE YEAR ENDED DECEMBER 31, 2016**

EXPENSES

2016 WMC Executive Board	\$ 115,983
2017 WMC Executive Board	8,704
Advertisement	1,405
Annual Credit Card Fee	450
Bank Fees	566
Care and Concern	3,647
Insurance - Employee Bond	500
Honorariums, Gifts and Donations	3,150
Missionary Messenger	45,407
Office Expense	11,651
Overseas Donations	70,280
Postage and Shipping	446
Printing	3,000
Promotional items	10,985
President's Expenses	23,149
President's Travel	2,775
Professional Services	2,400
Retirement Gifts	14,400
Returned deposits	256
Salaries	23,908
Scholarships	126,100
Storage fees	300
Special Representation	3,468
Summitt 2016	2,841
Transportation Expense	1,436
Website- WMC	80
World Federation Dues	3,570
World Federation Meeting - Houston	3,400
Other Expenses	527
Total Expenses	<u>\$ 484,784</u>

WOMEN'S MISSIONARY COUNCIL REGION SUMMARY REPORT

2016 - 2017									
EPISCOPAL DISTRICT	REGION	H B COBB	S.O.S.	HUNGER & MEALS FOR MILLIONS	OVERSEAS MISSION	WORLD FEDERATION	H.O.P.E.	ORGANIZATION & PROMOTION, PLEDGES, FINE ART AND OTHER***	TOTAL
FIRST	ARKANSAS	\$ 1,700.00	\$ 500.00	\$ 500.00	\$ 500.00	\$ 100.00	\$ 325.00	\$ 175.00	\$ 3,800.00
	EAST TENNESSEE	\$ 1,800.00	\$ 500.00	\$ 500.00	\$ 600.00		\$ 250.00	\$ 100.00	\$ 3,750.00
	WEST TENNESSEE	\$ 4,550.00	\$ 1,200.00	\$ 1,566.00	\$ 3,595.50	\$ 400.00	\$ 265.20	\$ 401.00	\$ 11,977.70
SECOND	KENTUCKY	\$ 1,000.00	\$ 500.00	\$ 200.00	\$ 400.00	\$ 31.10		\$ 25.00	\$ 2,156.10
	OHIO CENTRAL INDIANA	\$ 1,500.00	\$ 400.00	\$ 25.00	\$ 125.00	\$ 40.00	\$ 25.00	\$ 150.00	\$ 2,265.00
THIRD	KANSAS/MISSOURI	\$ 1,200.00	\$ 500.00	\$ 300.00	\$ 377.00		\$ 175.00	\$ 163.00	\$ 2,715.00
	MICHIGAN-INDIANA	\$ 3,121.00	\$ 1,300.00	\$ 500.00	\$ 500.00	\$ 50.00	\$ 1,000.00	\$ 50.00	\$ 6,521.00
	SE MO/ IL & WI	\$ 4,672.00	\$ 1,176.50	\$ 1,694.30	\$ 2,013.00	\$ 796.95	\$ 1,738.05	\$ 394.00	\$ 12,484.80
FOURTH	LOUISIANA	\$ 1,100.00	\$ 600.00	\$ 585.00	\$ 935.00	\$ 270.00	\$ 500.00	\$ 460.00	\$ 4,450.00
	MISSISSIPPI SOUTH	\$ 1,190.00	\$ 1,150.00	\$ 1,752.00	\$ 1,005.00	\$ 376.00	\$ 500.00	\$ 500.00	\$ 6,473.00
	NORTHEAST MISSISSIPPI	\$ 2,000.00	\$ 500.00	\$ 2,300.00	\$ 3,074.61	\$ 54.84	\$ 500.00	\$ 1,050.00	\$ 9,479.45
	SOUTH LOUISIANA	\$ 1,500.00	\$ 625.00	\$ 500.00	\$ 550.00	\$ 50.00	\$ 500.00	\$ 100.00	\$ 3,825.00
FIFTH	BIRMINGHAM	\$ 2,000.00	\$ 500.00	\$ 250.00	\$ 500.00	\$ 50.00	\$ 100.00		\$ 3,400.00
	FLORIDA	\$ 1,675.00	\$ 575.00	\$ 385.00	\$ 435.00	\$ 100.00		\$ 50.00	\$ 3,220.00
	NORTH CENTRAL ALABAMA	\$ 1,510.00	\$ 600.00	\$ 570.00	\$ 1,270.00	\$ 100.00	\$ 100.00	\$ 100.00	\$ 4,250.00
	SOUTHEAST ALABAMA	\$ 1,534.00	\$ 665.00	\$ 325.00	\$ 375.00	\$ 265.00	\$ 280.00	\$ 310.00	\$ 3,754.00
SIXTH	CENTRAL GEORGIA	\$ 2,500.00	\$ 1,000.00	\$ 1,000.00	\$ 3,000.00	\$ 300.00	\$ 1,000.00	\$ 325.00	\$ 9,125.00
	GEORGIA NORTH	\$ 3,000.00	\$ 750.00	\$ 800.00	\$ 900.00	\$ 100.00	\$ 700.00	\$ 400.00	\$ 6,650.00
	SOUTH GEORGIA	\$ 1,000.00	\$ 500.00	\$ 250.00	\$ 250.00		\$ 500.00		\$ 2,500.00
	WEST GEORGIA	\$ 1,000.00	\$ 500.00		\$ 325.00		\$ 500.00	\$ 25.00	\$ 2,350.00
	HAITI				\$25.00				\$ 25.00
SEVENTH	CAROLINA	\$ 2,464.00	\$ 700.00	\$ 3,415.40	\$ 2,839.60	\$ 593.90	\$ 600.00	\$ 1,345.50	\$ 11,958.40
	NEW YORK WASHINGTON	\$ 3,400.00	\$ 1,340.00	\$ 1,803.00	\$ 1,672.00	\$ 877.00	\$ 500.00	\$ 380.00	\$ 9,972.00
EIGHTH	CENTRAL TEXAS	\$ 1,000.00	\$ 250.00	\$ 400.00	\$ 350.00				\$ 2,000.00
	DALLAS/FT WORTH	\$ 1,200.00	\$ 500.00	\$ 1,250.00	\$ 1,400.00	\$ 40.00	\$ 650.00	\$ 100.00	\$ 5,140.00
	EAST TEXAS	\$ 2,000.00	\$ 500.00	\$ 500.00	\$ 1,500.00			\$ 100.00	\$ 4,600.00
	NORTHWEST TEXAS	\$ 110.00	\$ 35.00	\$ 70.00		\$ 30.00	\$ 40.00	\$ 50.00	\$ 335.00
	SOUTHEAST TEXAS	\$ 5,000.00	\$ 500.00	\$ 1,200.00	\$ 1,700.00	\$ 57.00	\$ 500.00	\$ 100.00	\$ 9,057.00
	JAMAICA				\$25.00				\$ 25.00
NINTH	ALASKA PACIFIC	\$ 655.00	\$ 355.00	\$ 200.00	\$ 124.54	\$ 90.00		\$ 25.00	\$ 1,449.54
	ARIZONA/NEW MEXICO	\$ 505.00	\$ 505.00	\$ 255.00	\$ 280.00			\$ 260.00	\$ 1,805.00
	NORTHERN CALIFORNIA	\$ 3,217.00	\$ 1,250.25	\$ 350.00	\$ 800.00	\$ 215.20	\$ 500.00	\$ 500.00	\$ 6,832.45
	OKLAHOMA	\$ 1,630.00	\$ 950.00	\$ 600.00	\$ 550.00	\$ 100.00	\$ 500.00	\$ 200.00	\$ 4,530.00
	SOUTHERN CALIFORNIA	\$ 3,100.00	\$ 1,000.00	\$ 300.00	\$ 600.00	\$ 200.00			\$ 5,200.00
TENTH					\$25.00				\$ 25.00
ELEVENTH					\$25.00				\$ 25.00
TOTAL		\$ 63,833.00	\$ 21,926.75	\$ 24,345.70	\$ 32,646.25	\$ 5,286.99	\$ 12,248.25	\$ 7,838.50	\$ 168,125.44

*** This column is a total of all monies received for the categories listed. If monies werereceived for purposes other than those listed, they were classified as "Other".
 Organization & Promotion = \$2765 (includes pledges)
 Fine Arts= \$3279.50
 Other= \$1794 (Founder's Day-\$300;Life Membership-\$500; Bread for the World-\$319; Leave A City Better-\$200; Church Women United-\$100;
 American Bible Society-\$100; National Council of Negro Women-\$100; Spiritual Life & Messenger -\$175)

Monies that were sent in directly from individuals, local churches or districts were added to the applicable Region.

**WOMEN'S MISSIONARY COUNCIL
REGION SUMMARY REPORT
2016 - 2017**

THE WOMEN'S MISSIONARY COUNCIL

CHRISTIAN METHODIST EPISCOPAL CHURCH



CHRISTIAN METHODIST EPISCOPAL CHURCH