

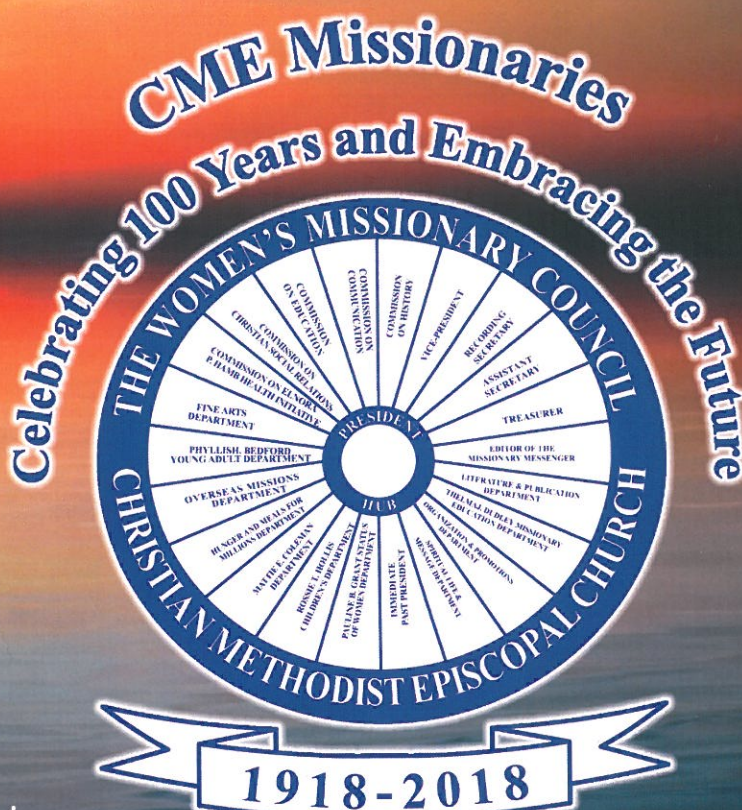
# OFFICERS' REPORTS

## The Women's Missionary Council

The Christian Methodist Episcopal Church

**THE EXECUTIVE BOARD**  
**February 15-20, 2018**

**Marriott Meadowview**  
1901 Meadowview Parkway  
Kingsport, TN 37660



**Dr. Princess A. Pegues**  
**International President**

Dr. Princess Ann Rogers Pegues,  
International President

Mrs. Jacqueline I. Scott,  
Vice President

Mrs. Carol Ferrell,  
Treasurer

Mrs. Juliet Waddell,  
Editor: *The Missionary Messenger*



## DRINKING FROM MY SAUCER

(with Liberties)

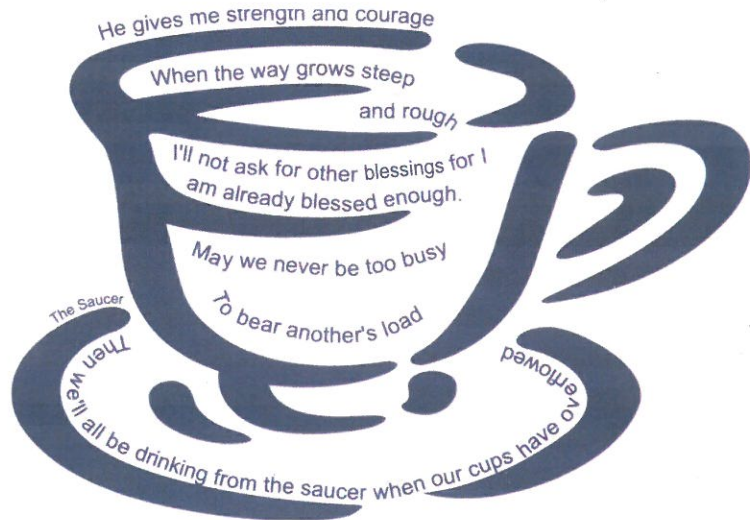
I never made a fortune and it's probably too late now  
But I don't worry about that much, I'm happy anyhow  
And as I go along life's journey, I'm reaping better than I sowed  
*I'm drinking from my saucer, cause my cup has overflowed.*

I ain't got a lot of riches, and sometimes the goings get tough  
but I've got missionaries who love me and that makes me rich enough  
I just thank God for his blessings and the mercies he's bestowed.  
*I'm drinking from my saucer, cause my cup has overflowed.*

I remember times when things went wrong, and my faith got a little  
thin but then all at once the dark clouds broke, and the sun peeked  
through again  
So, Lord help me not to gripe about the tough rows I hoed  
*I'm drinking from my saucer, cause my cup has overflowed.*

And if God gives me strength and courage, when the way grows  
steep and rough  
I'll not ask for another  
blessing, I'm already  
blessed enough  
And may I never be too  
busy to help another  
missionary bear her load  
*I'll keep drinking from my  
saucer, cause my cup has  
overflowed.*

Michael Combs



## DRINKING FROM MY SAUCER

(with Liberties)

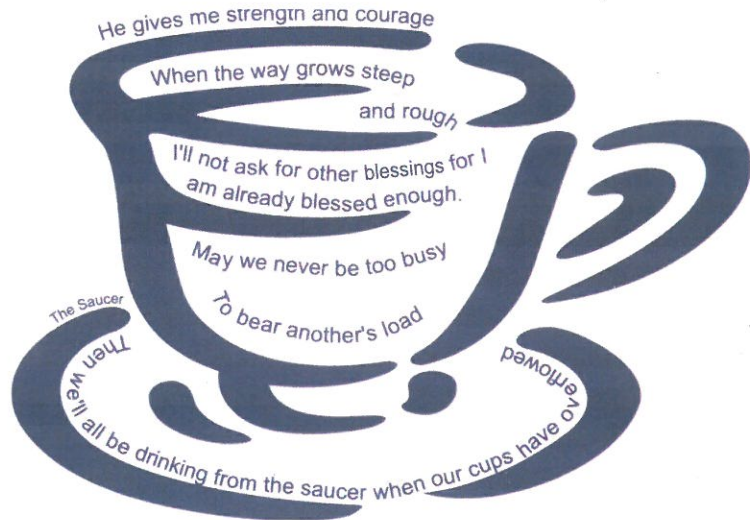
I never made a fortune and it's probably too late now  
But I don't worry about that much, I'm happy anyhow  
And as I go along life's journey, I'm reaping better than I sowed  
*I'm drinking from my saucer, cause my cup has overflowed.*

I ain't got a lot of riches, and sometimes the goings get tough  
but I've got missionaries who love me and that makes me rich enough  
I just thank God for his blessings and the mercies he's bestowed.  
*I'm drinking from my saucer, cause my cup has overflowed.*

I remember times when things went wrong, and my faith got a little  
thin but then all at once the dark clouds broke, and the sun peeked  
through again  
So, Lord help me not to gripe about the tough rows I hoed  
*I'm drinking from my saucer, cause my cup has overflowed.*

And if God gives me strength and courage, when the way grows  
steep and rough  
I'll not ask for another  
blessing, I'm already  
blessed enough  
And may I never be too  
busy to help another  
missionary bear her load  
*I'll keep drinking from my  
saucer, cause my cup has  
overflowed.*

Michael Combs







**Dr. Princess Ann Rogers Pegues**  
*The Tenth President of the  
Women's Missionary*



# The President's Report

TO: Senior Bishop L. L. Reddick, III, the College of Bishops and their spouses, Patron Bishop James B. Walker, Bishop C. James King, chairman of the College of Bishops, Council Officers, Immediate Past President, Dr. Elnora P. Hamb; Dr. Judith E. Grant, past president; Dr. Sylvia M. Faulk, president emeritus; General Officers and their spouses, the Judicial Council, Connectional officers, Heads of Educational Institutions, Clergy, Laity, Ecumenical Guests, the Executive Board and all my beloved Missionaries:

In the name of Jesus Christ who commanded us to go out into the highways and byways to help spread His everlasting gospel, I greet you. I thank the Lord, for all the blessings we received in 2017 and allowing us to see the New Year of 2018. We give thanks to God for all He has done, what He is doing and what He will do; we thank God for allowing the Council to be of service to others and the Christian Methodist Episcopal Church for **100 years!** Praise the Lord!!!

It is truly my joy and honor to be your President at this historic time and in the words of Patron Bishop James B. Walker, the "daughters of Dr. Mattie E. Coleman" are doing just fine.

I realize that we are here today not because of the work I have done nor the work that you have done - but we are here today because of God's grace! Let us count our blessings for God has allowed the Council to be of service to others for 100 years! *I thank God for His blessings and the mercies He's bestowed, "I'm drinking from my saucer, 'Cause my cup has overflowed."*

I am truly grateful to all you who have supported and participated in the many activities of the missionaries from the local level to the Council level. So many things have happened in our lives, our community, our nation and around the world. Some good and some not so good, but through it all, we are thankful that he has brought us through. It is my joy and honor to be the President of the Women's Missionary Council at this historic time - for the Council became an official organization of the CME Church in 1918 - thus, from 1918 to 2018 we are 100 Years old. Praise the Lord, and let us say Amen, Amen, Amen.

While a lot of us are dismayed with the actions of the present President of the United States, we know that the Lord is still in charge - and he has brought us through slavery and Jim Crow - and surely, he will bring us through the next **three** years!

My heart is filled with the deepest gratitude for you, my dear missionaries, friends and faithful supporters of the Women's Missionary Council. The arrival of 2018 brings to me a fresh realization of how much your dedication means to the Women's Missionary Council and the growth that we have incurred.

The Missionary Wheel of the Council has its spokes oiled and tuned and has been kept rolling through the diligent leadership and work done by the division leaders, departmental secretaries, committee/commission chairs, and with the very capable leadership of our Regional Presidents and the help of their dedicated and committed members.



I am always amazed by the work done as shown in the reports of the department Secretaries, Committee and Commission Chairs. Truly, you have been very busy and have made tremendous efforts to carry out [The Great Commission](#). So, on behalf of all the people you have helped, I say thank you for a marvelous job of being about God's business.

Many thanks to all of you for supporting the Stole project. This project was done to have an identifying tool for the missionaries / denomination and to help generate funds for the work of the Council. And thanks to Ms. Daisy Banks, for handling the stoles and to all of you for your support.

And look where he's brought us from! Who would have thought and believed that from a small organizing group of about 41 women in 1918 that this organization would grow and have a membership of hundreds in 2018 and is one of the most viable organizations of the CME Church.

We have made financial contribution at home and abroad. We supplement the salaries of the teachers in Jamaica by contributing annually. The three CME schools in Jamaica that the Council supports are: The Pauline B. Grant School, the Joseph C. Coles School, and the Mae C. Linsey School. All of the schools are Pre-K. The Pauline B. Grant School is located next to the Good News CME Church.

◆ The "Here I Am Ministries"

*Then I heard the voice of the Lord saying,*

*"Whom shall I send? And who will  
go for me us?"*

*And I said, "Here am I. Send me!"*

*Isaiah 6:8.*

This program was introduced in September 2011 and is an outreach program with the main focus on the Black Family and Community Service to help alleviate some of the problems found in our communities.

The problems in our communities and societies are great and they touch the lives of all of us. With the recent actions of the present President of the United States and Congress, we simply must do more than "talk." It is time that we devise workshops, programs, forums, etc., to help prepare our people to register to vote and get the proper credentials so that they can participate in the political process. I am again asking and pleading with you (as I have done for the last six years) to get involved with those organizations who are working hard for the betterment of the Black community. We must absolutely be diligent and realize that this is an **urgent** matter.

We, the members of the Executive Committee and staff, charge missionary societies on all level to accept the responsibility of working towards social equality in your respective neighborhoods surrounding communities and our society by tackling issues of race order, and social justice to further improve the overall well-being of those most disadvantaged by structural conditions and unjust laws of society aimed at the Black community.

As I traveled across our Zion to many of your individual churches speaking, presenting workshops, and visiting your annual conferences at your invitation, I witness the awesomeness of our international organization. The women who serve at the local level – the "grassroots" or in the "trenches" if you will, are so dedicated and are truly "being about



our Father's business" of doing mission at every opportunity and leaving the "walls" of the church and their meeting rooms to "take it to the "streets." I have been informed that some of you participated in the Million Women March held in January of this year. I congratulate you and thank you for making your presence known. I am so grateful to all of you for answering Jesus' call as Isaiah did, saying "Here Am I, send me." Last year I said that I am convinced that God keeps blessing us to be a blessing to others, and I am saying it again this year.

### Education

Since we were officially organized in 1918, one of the Council's major priorities has been that of educating our children. In keeping with that tradition, our Helena B. Cobb and P. Ann Pegues SOS (Save Our Sons) annual Scholarship funds provide scholarships and grants to our young people to help them get the best education possible. We have always invested in education by providing scholarships to our students. The finance for these scholarships comes from the Regions. The Regions turned in \$63,305.19 for Helena B. Cobb and \$24,411.00 for the P. Ann Pegues Scholarship Fund making a grand total of \$87,716.19 was raised for education. (See the treasurer's report for details). As the preachers' say, **"Somebody ought to say Amen and thank you Jesus."**

Our four year Helena B. Cobb Scholarship winners and P. Ann Pegues Save Our Sons (SOS) Scholarship Programs are doing just fine. We have given 325 students @ \$200.00 scholarships totaling \$65,000.00. In addition, we have given our Helena B. Cobb female higher education students \$4,000 per year and our

P. Ann Pegues Save Our Sons male higher education students \$2,000 per year making a total of \$92,200.00. *Surely, I am drinking from my saucer, 'cause my cup has overflowed!* For additional and detailed information see the vice president and treasurer's report. In addition we have supported our colleges by making a financial donation to them as well. We rank our financial support of our college students at the top of the chart. We have also made donations to "hardship" students. (Now, in the words of Bishop E. Lynn Brown, give yourself a hand). For more information about the scholarships, please see the vice president's report.

We have also contributed to Jamaica for aid in paying teachers' salaries and to the Eleventh Episcopal District for its mission work and other overseas mission asking totaling \$35,040.00. These donations were made possible through the generosity of our Overseas and Meals for Millions Departments

Our mentoring program for males is slowly being implemented by the Regions, and we need the help of more men of the church to help with this program. So, I am for the seventh time (7th) asking for our men to help us in this effort.

Through the Missionary March held at the Annual Conferences, we have contributed almost \$650,000 to the Bishops' Expansion programs. (See the Region President's reports in the Compilation Report Book).

### Communication/Technology

Our website, [www.womensmissionary-councilme.org](http://www.womensmissionary-councilme.org) is active and current. It has a wealth of information and is so designed that missionaries can be aware of announcements, activities and events of the missionaries, the



CME Church, our affiliates, sister denominations, and friends. We invite you to visit our site and check it out for yourself.

### Special Appeal

As you know, under the administration of President Obama the initiative, "*My Brother's Keeper*" was started and it was aimed at empowering **boys and young men of color**, a segment of our society which too often faces disproportionate challenges and obstacles to success. We need to help break down barriers, clear pathways to opportunities, and reverse troubling trends which show too many of **our boys and young men of color slipping through the cracks in our society**. The Council's SOS Program (Save Our Sons) has some of the same objectives as *My Brother's Keeper*. So, I am again asking the Men of the CME Church, pastors, and any group or individuals to work with us in developing and putting into action a progressive program of action to address the serious challenges that confront males of color. **This challenge was issued last year, but so far, I haven't had any takers.** If you have suggestions, please share them with me.

It has truly been my pleasure and honor to visit with missionaries across our Zion. In addition, I have attended the Unity Summit, Pastors' Conferences, Trustee Board Meetings of Miles College and Phillips School of Theology, Miles Founders' Day, the General Connectional Boards, General Officers Meetings.

As it is our custom to leave a city where the Executive Board meets a "little better," we left a monetary gift for one of the organizations that worked with children and adults with a diverse population. This year, under the lead-

ership of Dr. Nellie King and Mrs. Doris Boyd, the Council will leave gift cards ranging from \$25.00 to \$50.00 to a shelter for women and children.

### Ecumenical Involvement

The Council is affiliated with several ecumenical organizations. I have been active with most of our affiliated organization including Church Women United, World Federation of Methodist & Uniting Church Women (of which I am the President of the North America Area). We will be hosting a meeting in the fall. We had planned to meet in Trinidad, but on the advice of my event planner, we will NOT meet in Trinidad. An announcement detailing information about the meeting will be put on our website when all the details are worked out.

### Those Gone On

Since our last Executive Board, we have lost many, many, missionaries across our Zion whose names are called at each Executive Board. All of our deceased members' names are recorded in our Necrology Book and will be remembered at our Necrology Service this week.

We will continue with the programs we have and expand our SOS (Save Our Sons) and incorporate President Obama initiative *My Brother's Keeper*. I thank those of you who have incorporated [\*My Brother's Keeper\*](#) in your "*Here I Am Ministries*." To those missionaries, who have done this, I thank you and I know your community thank you.



Our magazine, *The Missionary Messenger* is up to date and we thank you for your subscriptions and we thank our editor, Ms. Juliet Waddell Pinkett, for a job well done.

## RECOMMENDATIONS

1. That this report of the Women's Missionary Council of the Christian Methodist Episcopal Church be received and referred to the proper committee.
2. That the Women's Missionary Council continue the "*Here I Am Ministries*" with President Obama's My Brother Keeper Initiative as a plan of action.
3. That the Women's Missionary Council continue to support the Eula W. F. Harris Gift Fund, the Helena B. Cobb and P. Ann Pegues SOS (Save Our Sons) Scholarship and Grant Programs, Hunger and Meals for Millions, the Elnora P. Hamb Health Initiative, the Overseas Missions and Organization and Promotion Departments and all other projects that are required by the Constitution and bylaws of the Council.
4. That the Women's Missionary Council continues their Partnership with the Balm in Gilead, the African American Denominational Leadership Health Initiative.
5. That we establish a supportive prayer network in each Region. Each missionary is encouraged to pray for our youth, our communities, our families, our people, our church, our nation, and peace at 12:00 noon daily.
6. That each society establishes a mentoring program for young males and young girls.

7. That we continue to commit ourselves to organize the Rossie T. Hollis, Mattie E. Coleman, and Phyllis H. Bedford Departments on all levels.

9. That a standing ovation be given to our host Bishop Henry M. Williamson, Sr; the Host Church, Mattie E. Coleman CME, Rev. Dewayen E. Moore, Pastor; and members of the Southeast District of West Tennessee and to the entire First Episcopal District for hosting this Executive Board.

Our achievements and success are not rooted in ourselves. They are the product of God's matchless grace, upon which we are eternally dependent. I want to express my thanks to the College of Bishops, the Presiding Elders, Pastors, the Laity, missionaries and friends for the help and support you have given me on this journey.

And finally, my dear missionaries and friends,

*If God Gives Me Strength and Courage  
when The Way Grows Steep and Rough,  
I'll Not Ask For Other Blessings  
I'm Already Blessed Enough  
and May I Never Be Too Busy  
to Help my beloved missionaries  
Bear Their Loads then I'll Keep Drinking from  
My Saucer "because My Cup Has Overflowed!"*

**God's blessings,**

*Priscilla Pegues*



# *The Women's Missionary Council*

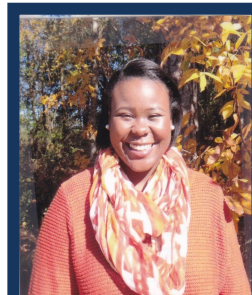
**Christian Methodist Episcopal Church**

## **Executive Board**

### *The Vice President's Report*



*7<sup>th</sup> Episcopal District*  
Aliyah W. Bivens



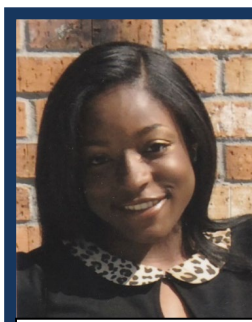
*6<sup>th</sup> Episcopal District*  
Nesheika K. Caleb



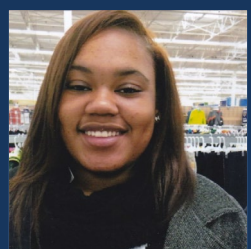
**Ms. Jacqueline I. Scott**



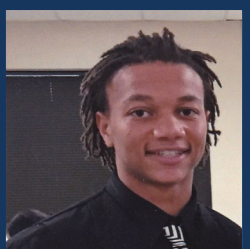
*3<sup>rd</sup> Episcopal District*  
Sydni N. Jackson



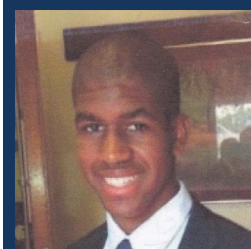
*1<sup>st</sup> Episcopal District*  
Sascha S. Young



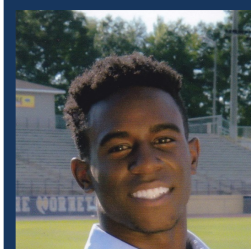
*5<sup>th</sup> Episcopal District*  
LaBrenica G. Frazier



*8<sup>th</sup> Episcopal District*  
Chaston L. Brooks



*9<sup>th</sup> Episcopal District*  
Bryce Bentley



*6<sup>th</sup> Episcopal District*  
Christopher B. Miller

*“Investing in the Future through Education, Outreach and Service”*



**Dr. Princess R. Pegues  
President**

**Bishop James B. Walker  
Episcopal Patron**

# *The Vice President's Report*

**“The Lord is my light and my salvation; whom shall I fear? The Lord is the strength of my life; of whom shall I be afraid?” Psalm 27:1**

*I greet each of you in the “Omnipotent, Almighty, All Powerful and Divine” name of our Lord and Savior.*

**To: Senior Bishop Lawrence L. Reddick III and Mrs. Wynde Jones Reddick, First Lady; Our International President, Dr. Princess Ann R. Pegues, Patron Bishop James B. Walker and Mrs. Delois Walker, Host Bishop Henry M. Williamson, Sr. and Dr. Doris Y. Williamson, First Lady; Bishop C. James King, Chair, College of Bishops, their wives and widows, Council Officers, Immediate Past President, Dr. Elnora P. Hamb, Past President, Dr. Judith E. Grant, Dr. Sylvia M. Faulk, President Emeritus, and Mrs. Lizzie Willis, Past Vice President, Executive Board Members, General Officers and their spouses, the Judicial Council, Connectional Officers, Heads of Educational Institutions, Clergy, Missionaries, Laity and Special Guests:**

**I give thanks to the Lord for each of you has truly blessed The Women's Missionary Council. You reached out so willingly and answered the call to support our Scholarship Programs. It is such a wonderful blessing to have Regional Vice Presidents and Presidents that continue to do everything within their power to support The Helena B. Cobb and P. Ann Pegues (Save Our Sons) Scholarship Funds! I'm so grateful!**

**A good education gives individuals the practical knowledge to succeed in their profession of choice after landing a job. It, also, allows individuals to expand upon their natural skills and talents and turn them into something greater. When a solid education is combined with experience, individuals can truly show their potential. In a highly competitive and globalized economy, higher education prepares members of each society to accomplish great feats and meet the challenges of the future.**

**The Journal of Blacks in Higher Education reports the following:**

**“Statistics on African American Males and Females”**



Higher education has been characterized as “one of the greatest hopes for intellectual and civic progress in this country.

Dr. Ivelaw Lloyd Griffith, Ninth President of Fort Valley State University and Tenth Vice Chancellor and Principal of the University of Guyana stated the following:

*Historically, Black Colleges and Universities are graduating hundreds of distinguished educators, entrepreneurs, athletes, dentists, physicians and scientists.*

Since their establishment 180 years ago, HBCUs have provided African American students with the best mechanism, and for some, the only opportunity to receive a collegiate education. Today, 101 HBCUs located in 19 states, the District of Columbia and the U. S. Virgin Islands continue Dr. Griffith’s dreams and beliefs.

More recently, a Gallup-Purdue University Poll found the following:

- Approximately 55% of African American HBCUs graduates said they strongly agreed that their college or university “*prepared them well for life outside of college,*” compared to less than 30% of non-HBCU African American graduates.

- More than half of HBCU graduates reported “*thriving in purpose and well being*” compared to 43% of African American graduates from non-HBCUs. In addition, almost half of African American HBCU graduates said their college or university was “*the perfect school*” for them compared to 34% of non-HBCU African American alumni.

- Almost 50% of African American HBCU graduates said they couldn’t “*imagine a world*” without the HBCU they attended. Only 25% of African American graduates of predominantly White institutions felt the same.

The well-preserved intentions of HBCUs since their founding have been to provide African Americans and other minority groups a seat at the proverbial table of higher education and to make possible life altering opportunities beneficial for their families, communities, as well as for America and the world. The nation’s HBCUs have persevered in providing higher educational opportunities not only for African Americans but for students of all races and ethnicities.

I am extremely appreciative to all Vice Presidents on every level for your commitment and constant support and to all Missionaries throughout the Connection.

Humbly submitted,

*Jacqueline L. Scott*

***“Knowledge is power,  
Information is liberating.  
Education is the premise of progress,***





Jacqueline I. Scott

*in every society, in every family."*

---Kofi Annan

## HELENA B. COBB ANNUAL SCHOLARSHIP RECIPIENTS 2016-2017

<u>NAME</u>	<u>COLLEGE/UNIVERSITY</u>
Adams, Curlee L.	Garrett Evangelical Theological Seminary
Adkins, Daniel O.	Texas Southern University*
Allen, Broderick Omarr	Valdosta State University
Allen, Candice L.	University of Louisiana @ Lafayette
Allen, Jesiah	Monmouth College
Alston, Malcom	Lindenwood University
Anderson Jr., Ronza Joseph	Jackson State University*
Austin, Jarren DeMichael	Kilgore College
Baines, James Howard	Columbia College @ Chicago
Baines, Jamie J.	Chicago State University
Baldwin Jr., Todd Tushay	Princeton University
Banks, Termaya C.	Wiley College*
Barnes, Brandon Xavier	Prairie View A & M University
Barnes, Delvon	Tennessee State University*
Barnett, A'Nya Diamond	Solano Community College
Barnett, Alexis	Itawamba Community College
Bates, Jarret Sterling	<b>Miles College*</b>
Bates, Jordan Satchell	Alabama State University
Bell, Edwin T.	Prairie View A & M University
Bell, Jade M.	Atlanta Metropolitan State College
Bennett, Errol	Cuyahoga Community College
Bentley, Jordan Scott	University of California @ Irvin
Bethel, Brittany Adele	University of Tennessee @ Knoxville
Bias, Raquel Sheree	Macomb Community College
Bibbs, Travis C.	University of Arkansas @ Pine Bluff*
Black, Kaitlyn A.	Austin Peay State University
Blackshell-Fair, Julia La'Shay	University of Houston
Blissett, Ti'Mia Lanitra	Mississippi State University
Body, Caleesha	Hampton University*
Bolder, Chasity Renee	Marian University
Boyd, Kedric L. II	Wiley College*
Bradley, Remon DeV Vaughn	<b>Lane College*</b>
Bradley, Vartavius Frederick	Itawamba Community College
Brazil, Brajae C. M.	University of Tennessee @ Knoxville
Brooks, Phylinese Vashawn	Columbia College Chicago
Broom, Sania Mallic	University of Houston Downtown
Brown, Ellisa A.	Johns Hopkins University
Brown, Kaila Louise	<b>Lane College*</b>
Brown, Maya Kristy	Tennessee State University*
Brown, Savannah Angeli	San Jose State University
Brown, Tori Kaitlyn	Austin Peay State University
Buford, Alicia P.	Georgia State University
Burton, Jalen O'Brien	Emmanuel College
Burts, Shondrea Marie	Wiley College*
Cadet, Christopher M.	Hampton University*
Cadet, Mendianny	North Carolina A & T State University
Campbell, Breanna D.	Columbus State University
Capler, Mariah Fonzika	Alcorn State University*
Carr, Joseph Raphael	Tennessee State University*
Carter Jr., Arthur James	University of Memphis

Catron, Shernice Marie  
Chalk, Keyona Arnell

Tennessee State University\*  
Southern University A & M College\*

**NAME**

Chavis, Shunika Renee  
Church, Karissa Mia  
Cole, Darius Jamil  
Cole, Dawyell Carla  
Cole, Joshua D.  
Coleman, Tiara Nicole  
Coles, Ari Jorai  
Collier, Kiana Charane  
Combs, Kelsea  
Compton, Deaderick L.  
Cooper, Carlie Celine  
Cooper, Kennedy Alyse  
Coppadge, Samantha Leavette  
Crenshaw, Leslie M.  
Crockett Jr., Tarontate D.  
Croker, DaQuesta S.  
Cummings, Finnie Sergio J.  
Cureton, Shatiya Nichelle  
Curry, Madeline Beverly  
Darden, Jordyne J.  
Dasher, Kyle Douglas  
Dasher, Shawn Michael  
Davis, Makale J.  
Dennis, Diana D.  
Dennis, Jacob W.  
Dennis, Olivia M.  
Dickey, Alex J.  
Dickey, Alfred J.  
Dickey, Jarrett V.  
Dixon, J'Tayla L.  
Donyae, Kamren  
Doss, Mykhail I.  
Dotson, Victoria Shontrice  
Dukes, Jacquelyn R.  
Dumus, Traéc Christine  
Dupree, Isaiah Collier  
Durandisse, Cagney C.  
Durr, Keenan Vizquel  
Edmond, Da'Nesha Autumn  
Ellis, Reece Myrie  
Ervin, Nia A.  
Evans, Aubrey N.  
Farmer, Alexis V.  
Farris, Oliviyah Wilhemenia  
Ford, Jasmyne SharDai  
Frelot, Breanna Jolester  
Frith, Faith L.  
Garland, Johnnita Michelle  
Garnett, Ruben C.  
Gayfield, Tarji A.  
Gee, Marquice I.  
Gilliam, Jina Olisa  
Gilliam, Lawrence J.  
Glover, Matthew Rob-Lloyd  
Gooden, Isley

**COLLEGE/UNIVERSITY**

University of Arkansas @ Pine Bluff\*  
Kentucky State University\*  
Saint Augustine's University  
Illinois State University  
McKendree University  
Fisk University\*  
Shorter University  
Henry Ford Community College  
Austin Peay State University  
Clayton State University  
University of Michigan  
Henry Ford College  
University of North Carolina @ Greensboro  
Alabama State University  
Lindenwood University  
Allen University  
Southwest Community College  
**Paine College\***  
Hampton University\*  
Central Michigan University  
Augusta University  
Kennesaw State University  
Atlanta Metropolitan State College  
Walden University  
University of Maryland @ Baltimore County  
University of Maryland @ College Park  
Anderson University  
West Virginia University  
Anderson University  
University of Louisiana @ Lafayette  
Mercer University  
DePaul University  
University of Tennessee @ Chattanooga  
Milwaukee Area Technical College  
Bethune-Cookman University\*  
Mississippi State University  
Trinity Washington University  
Jackson State University\*  
Claflin University\*  
Truman State University  
Valencia Community College  
Kent State University  
Kennesaw State University  
Georgetown University  
**Miles College\***  
San Francisco State University  
Champlain College  
Texas Southern University\*  
Middle Tennessee State University  
Truman State University  
Ball State University  
Florida A & M University\*  
Morehouse College\*  
Alabama A & M University  
Southwestern Illinois College



Goodwin, Tiffany Lashia  
Gordon, Courtney Michele

Southern University\*  
Fort Valley State University\*

**NAME**

Graves, Jadan  
Graves, William H. III  
Gray, Mikea A.  
Gray, Robin Monae  
Green, Isaiah Markel  
Green, Jocelyn Lisette  
Grier, Wesley Donte  
Hall, Jaleesa S.  
Hall, Torrance T.  
Hamiel, Clara D.  
Hamilton, Caleb Stewart  
Hamilton, Christopher Lee  
Hamilton, Terrell D.  
Hardin, Dominick B.  
Hardin, Mark A.  
Harper, Davis Delfon  
Hassell, Justin McManis  
Helton, Candice H.  
Henderson, Alexandria Yvonne  
Henderson, Jasmine Janay  
Henderson, Jordan Milin  
Henderson, Sara Cenice  
Hester, Jordyn  
Hewitt, Jewel Erica  
Hill, Ariel M.  
Hill, Imani Zoe  
Hill, Latonya  
Hogg, Kyle Joel  
Holbrook, Tavion Jeremiah  
Hollinger, London M.  
Hollis, Ashley N.  
Holt, Ayanna Kariamnn  
Holt, Brianne L.  
Holt, Jamison Cartrez  
Holt, Jasmine Yulvette  
Horn, Zachary Miller  
Horton, Ashely Elaina  
Horton, Elijah Terrell  
Howell, Mahalle  
Hudson, Lynnae Nicole  
Hughes, Donovan J.  
Hunt, Jazmin Shalinda  
Hunter, Destinee Shianne  
Hutcherson, Brian  
Hutcherson, Jessica S.  
Idhe, Calarie Loveeree  
Isom, Keisa Ni'Stacia  
Jeti, Panashe  
Jimenez, Monica A.  
Johnson, Diamond Denise  
Johnson, Sean  
Johnson, Sydney Raquel  
Jordan, Taylor Gwen  
Kennedy, Aja Secoya  
Kennedy, Altameshia Itkariona

**COLLEGE/UNIVERSITY**

Berkley College of Music  
Berkley College of Music  
Spelman College\*  
Tennessee State University\*  
Texas A & M University @ Texarkana  
Millsap College  
Jackson State University\*  
Liberty University  
Grand Canyon University  
Wayne State University  
University of North Georgia Gainesville Campus  
University of Arkansas @ Little Rock  
Lawson State Community College  
University of Tennessee @ Chattanooga  
Southern Methodist Univ. Perkins Seminary  
Tusculum College  
Jackson State University\*  
Trinity Washington University  
Baptist College of Health Sciences  
The University of Mississippi-Ole MISS  
Vanderbilt University  
Tennessee State University\*  
Spelman College\*  
Stephen F. Austin State University  
Tennessee State University\*  
University of Michigan @ Dearborn  
Merritt College  
Diablo Valley College  
University of Tennessee @ Knoxville  
Miami University  
Henry Ford Community College  
Savannah State University  
Oakland University  
Middle Tennessee State University  
Middle Tennessee State University  
Tennessee State University\*  
Concorde Career College  
North Carolina A & T State University  
Itawamba Community College  
Art Institute of Michigan @ Novi  
Western Michigan University  
Georgia College & State University  
University of California @ Riverside  
University of Georgia @ Athens  
Clayton State University  
Lansing Community College  
Alabama A & M University  
**Miles College\***  
Alverno College  
Grand Valley State University  
**Miles College\***  
Florida A & M University\*  
Western Michigan University  
**Paine College\***  
Georgia State University

Key, Tyrani  
King, Amani Renee  
Kirven, Sydney Jae

Itawamba Community College  
St. Louis Community College @ Florissant Valley  
Xavier University @ Louisiana\*

**NAME**

Taylor, Tyler Reid  
Lee, ZyQwn  
Lindsay, Sydney Mayka  
Loper, Anthony Rahim  
Lott, Kristopher Dontae  
Love, Belynda  
Lowe, Keriana Yvonne  
Mahoney, Taliyah Bianca  
Marshall, Ariana A.  
Marshall, Vanessa C.  
Martin, Mariah Rashay  
Martin, Tiana  
Massey Jr., Michael  
Matchett, Julius Benjamin  
McBride, Frantasia A.  
McClaine, Kellie  
McCombs, Shaun  
McCormick, Stefanee Nicole  
McCullough, Ebony  
McDuffie, Julian Scott  
McGaughy, Danesia  
McGaughy, Jacelyn Tori  
McManis, Dominique L.  
McWhorter, Demetrius Darnel  
Milam, Larciel D.  
Miller, David Lee  
Miller, Lindsay R.  
Mitchell, Alexia Nicole  
Mitchell, Allen Michael  
Mitchell, Almiea  
Mitchell, Drexel Normen  
Monemeh, Ugonne Lucy  
Moore, Annie M.  
Morman, Shana  
Morris, Andrea Gail  
Morris, Jalen Armani  
Morris, Shaarne Shaleek  
Mosley, William Norris  
Mullins, Aaliyah DeShawn  
Mullins, Aaron D.  
Murrell, Alexis M.  
Murrell, Ashley N.  
Newman, Christopher Brandon  
Newman, Erica Nicole  
Nixon, Mikaela Regine  
Nnaji, Christine  
Nnaji, Gloria Ihuoma  
Odell, Tieranee Nicole  
Odunleye, Olakunie Abiodun  
Oliver, Adayah Yvette  
Oliver, Courtney K.  
Owens, Kyla J.  
Palmer, Tamiah Jannae  
Perry, Ja'lon  
Perry, Simone Nicole  
Persons, Ricky Allan

**COLLEGE/UNIVERSITY**

Tuskegee University\*  
Jones Junior College  
Winston Salem State University\*  
Fontbonne University  
University of West Florida  
Texas Woman's University  
Auburn University @ Montgomery  
Johnson C. Smith University  
University of Louisiana @ Lafayette  
San Francisco State University  
University of Louisiana @ Lafayette  
Spelman College\*  
University of Tennessee @ Knoxville  
Georgia State University  
**Miles College\***  
Oakland Community College  
Florida A & M University (FAMU)\*  
North Carolina Central University  
Trinity Washington University  
**Miles College\***  
University of Mississippi-Ole MISS  
Itawamba Community College  
University of Tennessee @ Chattanooga, TN  
North Greenville University  
North West Community College  
Appalachian State University  
Lamar University @ Beaumont  
Prairie View A & M University\*  
Memphis Theological Seminary  
**Miles College\***  
Wesley Theological Seminary  
Jackson State University\*  
Florida A & M University (FAMU)\*  
Abraham Baldwin Agriculture College  
Bradley University  
Oakland Community College  
Florida A & M University\*  
Coker College  
Shelton State Community College  
Mississippi State University  
Tennessee State University\*  
University of Tennessee @ Knoxville  
Southwest Community College  
University of Tennessee @ Chattanooga  
Virginia Union University\*  
Penn State University  
Trinity Washington University  
Austin Peay University  
University of Missouri  
Southwest Community College  
Depauw University  
University of Toledo  
Ferrum College  
**Paine College\***  
Howard University\*  
Tuskegee University\*



Pettus, Xavier Javon  
Petty, Yolande

Radford University  
**Phillip's School of Theology-ITC**

**NAME**

Pickney, Teveine  
Pittman, Tilliam  
Poindexter, Melrick T.  
Pope, Davion Rakeem  
Porter, Jacklyn E.  
Porter, Jazzmyn K.  
Porter, Kwintyn M.  
Porter, Tiffany S.  
Price, Dominique E.  
Price, Jasmyne Ameire  
Prince, Simone Y.  
Proctor, Jeffery  
Pruitt, Brittany O.  
Quiller, Ebonné M.  
Quinn, D'Nashia Davalyai  
Rasberry, Breana J.  
Ratcliff, Bryce Lewis  
Reynolds, Monique LaChelle  
Rice, Carlos Chevez  
Richardson, Nakia Sarida  
Rivers, Kenya L.  
Roberson, Cheynna K.  
Roberts, Morgan  
Ross, Cyris Ja'Mel  
Ross, Kareen L.  
Rossi, Scherraque A.  
Rountree, Mariah T.  
Ruff, Kianna M.  
Rutledge, Lauren Janay  
Salter, Brandon JaVon  
Sanchez, Antonio  
Sanders, Delano Bernard  
Sanders, Marlon Raymone  
Savannah, LaWiley Pettigrew  
Sharpe, Tanisha Monique Renee  
Shaw, Richard D.  
Shaw, Trentyn M.  
Simon, Darrius Ray  
Simon, Kenbra Elisabeth  
Simpson, Braxton  
Smith, Andare Chase  
Smith, Elijah Xavier  
Smith, Jessika  
Smith, Jurne T.  
Sommerville, Symone Barbara  
Sommerville, Sydney Joy  
Sorrells, Josef DeWayne  
Spearman, Demetric A.  
Spencer, Stacey  
Spencer, Stephany  
Stembridge, Christian Taylor  
Stephens, Bria  
Stewart, Eric  
Taylor, Alexis Charnay  
Taylor, Bruce R.  
Taylor, Melvonina A.  
Taylor, Monae

**COLLEGE/UNIVERSITY**

Western Illinois University  
Southern College of Optometry  
The University of Mississippi-Ole MISS  
Troy University  
Lewis University  
Governors State University  
Lewis University  
University of Mississippi-Ole MISS  
Webster University  
University of Mississippi  
Kent State University  
**Miles College\***  
Kilgore College  
Fort Valley State University\*  
Tougaloo College\*  
Texas A & M University  
Grambling State University\*  
University of South Carolina @ Aiken  
University of Southern Mississippi  
San Diego State University  
Lawson State Community College  
Tuskegee University\*  
Towson University  
Florida State University  
Eastern Illinois University  
Tidewater Community College  
University of West Georgia  
Phillips School of Theology ITC  
Auburn University  
LaGrange College  
California State University East Bay  
East Mississippi Community College  
Itawamba Community College  
Middle Georgia State University  
Savannah State University  
Alabama State University  
Alabama State University  
Southern University A & M College\*  
The University of Alabama  
Madonna University  
University of Georgia @ Athens  
El Camino College  
Darton State College/Albany State University  
University of North Carolina @ Greensboro  
Georgia Southern University  
Spelman College\*  
Morehouse College\*  
Northwest Community College  
North Carolina A & T State University  
Livingstone College  
Valdosta State University  
Emory Law School  
South University  
Northwestern State University  
Southwest Tennessee Community College  
Columbia College  
**Texas College\***

**NAME**

Tillis, Derrick Daj'zon  
 Toliver, DeNya  
 Townsend, Darius  
 Tracy, Nicholas N.  
 Travillion, Jillian P.  
 Trice, Charay  
 Tucker, Hillary Lashae  
 Tucker, Meagan Arlyse  
 Turnage, Mitzi Y.  
 Turner, Jada Elecia  
 Turner, Russell Jerrod  
 Vann, Tabitha J.  
 Vines, Daysean L.  
 Wade, Jasmine Zuri  
 Wadlington, Corey Jalen  
 Walker, Glenda  
 Ware, Jatoya Monique  
 Washington, Denzel J.  
 Washington, Kendrick Austin  
 Webb, Brandon A.  
 Welch, Carlos  
 Wells, Christina E.  
 Wells, Raiven L.  
 Wheelchel, Milton Thomas  
 Whitaker, Kierra Riana  
 White, Chloe  
 White, Conease  
 White-Blue, Christiana Moná  
 Wilks, Tyrieshia C.  
 Williams, Jaala Angelise  
 Williams, Janai Angelique  
 Williams, Jaresiah A.  
 Williams, Jessica Noelle  
 Williams, Moses M.  
 Wilson, Jamario Detarius  
 Wilson, Lauren Michelle  
 Windom, Kevon J.  
 Wooden, Kennedi Iman  
 Woods, Jachovian L.  
 Woods, Shamar Ervin  
 Yancy Jr., Clifton Raynard  
 Yeoman, Nikhol Jacklynn

**COLLEGE/UNIVERSITY**

University of Wisconsin @ Oshkosh  
 Itawamba Community College  
 Morthland College  
 Fitchburg State University  
 Jackson State University\*  
 Kent State University  
 Piedmont College  
 University of Louisiana @ Lafayette  
 Webster University  
 Georgia Gwinnett College  
 Tennessee State University\*  
 Tennessee State University\*  
 Highland Community College  
 San Francisco State University  
 The University of Mississippi  
 Apex School of Theology  
 Virginia College @ Birmingham  
 University of Tennessee @ Chattanooga  
 University of Alabama @ Birmingham  
 Wilberforce University\*  
 Itawamba Community College  
 Western Michigan University  
**Lane College\***  
 Piedmont College  
 Wesley University  
 Spelman College\*  
 Vincennes University  
 The University of Akron  
 Northwest Community College  
 Austin Peay State University  
 Western Governors University  
 Tennessee State University\*  
**Miles College\***  
 University of Missouri @ St. Louis  
 Middle Tennessee State University  
 California Baptist University  
**Lane College\***  
 University of Southern Mississippi  
 Vanderbilt University  
 Rust College\*  
 Jackson State University\*  
 California Baptist University



*"Education is the key to success in life and teachers make a lasting*



*impact in the lives of their students. -----Solomon Ortiz*



## SUMMARY OF ANNUAL SCHOLARSHIPS

<b>Bold print</b> indicates students attending CME Colleges.....	18
Asterisks indicate students attending <b>*HBCUs</b> .....	77
Students attending other Colleges/Universities.....	222
Students attending Phillips School of Theology or other Seminaries.....	8
Hardship Scholarships.....	11
Total Scholarships Awarded.....	336

A total of \$106,500.00 was given in Scholarships to aid students  
with their college tuition.

### **\*Historically Black Colleges and Universities (HBCUs)**

HBCUs have made great strides in providing educational opportunities for African Americans. Federal law (20 USCS 1061) defines historically Black colleges and universities as institutions of higher education “whose principal mission. . . is the education of Black Americans.” Although providing higher education opportunities for African Americans has been the primary goal of these institutions, they have enrolled and graduated many students, regardless of their race, ethnicity, or income level.



***“A teacher plants the seeds of knowledge and sprinkles them with love.”***

***-----Author Unknown***



# PRESIDENTS/VICE PRESIDENTS' FINANCIAL REPORT

## JANUARY, 2018

EPISCOPAL DISTRICT	REGION	PRESIDENT	VICE PRESIDENT	2018 H. B. COBB	2018 P. ANN PEGUES SOS	TOTAL
<b>FIRST</b> Bishop Henry M. Williamson, Sr.	West Tennessee	Sheila Holman	Juanita Mitchum	4,225.00	*1,500.00	5,725.00
	East Tennessee	Virginia J. Boyd	Martha Upshur-Merriweather	1,800.00	500.00	2,300.00
	Arkansas	Virgie G. Phillips	Jimmie White	1,700.00	500.00	2,200.00
<b>SECOND</b> Bishop Marvin Frank Thomas	Ohio/Central Indiana	Phyllis A. Tyler	Anita Kellon	00.00	00.00	00.00
	Kentucky	Vicki S. Rogers	Wanda Morrow	1,000.00	500.00	1,500.00
<b>THIRD</b> Bishop Sylvester Williams, Sr.	Kansas/Missouri	Liz Bishop	Margaret Pender	1,200.00	500.00	1,700.00
	Michigan/Indiana	Terry Alexander	Kathryn Blake	3,077.00	1,610.00	4,687.00
	S.E. MO/Illinois/WI	Marguerite Guy	Frankie Loving	4,772.50	1,040.00	5,812.50
<b>FOURTH</b> Bishop Thomas L. Brown, Sr.	Louisiana	Bonita Black	Yvonne Winzer	1,500.00	700.00	2,200.00
	South Louisiana	Rose Locksey	Romona Hyche	1,500.00	600.00	2,100.00
	N. E. Mississippi	Ardelia Briggs	Rosetta Edwards	3,000.00	1,000.00	4,000.00
	Mississippi South	Terisa McQueen	Sylvia Carter	1,190.00	1,280.00	2,470.00
<b>FIFTH</b> Bishop Teresa Snorton	North Cen. Alabama	Isola Lark	Julia Carter	1,740.00	600.00	2,340.00
	South East Alabama	Emogene Crittenden	Marie Johnson	2,000.00	600.00	2,600.00
	Birmingham	Mary Thompson	Gloria C. Street	2,500.00	500.00	3,000.00
	Florida	Brenda Buie	Deborah L. Dickenson	2,280.00	760.00	3,040.00
<b>SIXTH</b> Bishop Kenneth W. Carter	Georgia North	Betty Christian	Hilda Stuckey	5,800.00	2,326.00	8,126.00
	Central Georgia	Calandra F. Hunter	Adeline Felton	2,500.00	1,000.00	3,500.00
	South Georgia	Gloria Cook	Nylon Davis	1,000.00	500.00	1,500.00
	West Georgia	Linda Bowens	Brenda Wise	1,200.00	600.00	1,800.00
<b>SEVENTH</b> Bishop James B. Walker	Carolina	Adrienne C. Speas	Carolyn Stafford	2,465.00	1,000.00	3,465.00
	New York/Washington	Sandra R. Chambers	Wanda Glass	3,000.00	1,000.00	4,000.00
<b>EIGHTH</b> Bishop L. L. Reddick III	Central Texas	Debra Wickware	Pamela Wilson	250.00	250.00	500.00
	Dallas/Ft. Worth	Dorothy L. Johnson	Gloria J. Craig	1,520.00	500.00	2,020.00
	East Texas	Crystal D. Lewis	Diana Hardiman	1,700.00	300.00	2,000.00
	North West Texas	Isis Wiley	Pauline Davis	210.00	160.00	370.00
	South East Texas	Linda Woolage	Patricia Bell	5,000.00	500.00	5,500.00
<b>NINTH</b> Bishop Bobby R. Best	Alaska/Pacific	Stephanie Dedmond	Jennie Stephens	1,041.00	500.00	1,541.00
	Arizona/New Mexico	Tanda L. Meadors	Rosemary Hill	550.00	550.00	1,100.00
	Northern California	Verna McCalister	Michele Jackson	2,314.69	1,011.00	3,325.69
	Oklahoma	Emma J. Reagor	Monique R. Varner	1,895.00	1,050.00	2,945.00
	Southern California	Wanda Thomas	Renee Woodruff	2,800.00	1,200.00	4,000.00
<b>TOTAL PRESIDENTS AND VICE PRESIDENTS' REPORT</b>				<b>66,730.19</b>	<b>24,637.00</b>	<b>91,367.19</b>

### *In Memory Of:*

Mrs. Melissa Fox **\$300.00**

Mrs. Alberta Jackson

*(Mother & Aunt of Mrs. Doris F. Boyd)*

Given to the West TN Region SOS\*

Mrs. Montine Webb **\$700.00**

*(Sister of Ms. Juliette Wadlington & Ms. Jacqueline I. Scott)*

Given to the West TN Region SOS\*

Rev. Dr. Nehemiah Mitchum **\$500.00**

*(Husband of Mrs. Juanita Mitchum)*

Given to the West TN Region SOS\*

Helena B. Cobb 66,730.19

P. Ann Pegues (SOS) 24,637.00

**GRAND TOTAL \$91,367.19**

*2/18/18 Total: \$93,067.19*



# Apple Region Awards



## **G**olden Apple Award (\$3,000 up)

<u>E.D.</u>	<u>Region</u>	<u>President</u>	<u>Vice President</u>	<u>Amount</u>
Sixth	Georgia North	Betty Christian	Hilda Stuckey	8,126.00
Third	S.E.MO/Illinois/WI	Marguerite Guy	Frankie Loving	5,812.50
First	West Tennessee	Sheila Holman	Juanita Mitchum	5,725.00
Eighth	South East Texas	Linda Woolage	Patricia Bell	5,500.00
Third	Michigan/Indiana	Terry Alexander	Kathryn Blake	4,687.00
Fourth	N.E. Mississippi	Ardelia Briggs	Rosetta Edwards	4,000.00
Seventh	New York/Washington	Sandra R. Chambers	Theresa Bell	4,000.00
Ninth	Southern California	Wanda Thomas	Renee Woodruff	4,000.00
Sixth	Central Georgia	Calandra Hunter	Adeline Felton	3,500.00
Seventh	Carolina	Adrienne C. Speas	Carolyn Stafford	3,465.00
Ninth	Northern California	Verna McCalister	Michele Jackson	3,325.69
Fifth	Florida	Brenda Buie	Deborah L. Dickenson	3,040.00
Fifth	Birmingham	Mary Thompson	Gloria Street	3,000.00



## **R**ed Apple (\$1,700 - \$2,999)

<u>E.D.</u>	<u>Region</u>	<u>President</u>	<u>Vice President</u>	<u>Amount</u>
Ninth	Oklahoma	Emma Reagor Mentor	Monique R. Varner	2,945.00
Fifth	South East Alabama	Emogene Crittenden	Marie Johnson	2,600.00
Fourth	Mississippi South	Terisa McQueen	Sylvia Carter	2,470.00
Fifth	North Cen. Alabama	Isola Lark	Julia Carter	2,340.00
First	East Tennessee	Virginia J. Boyd	Martha Upshur-Merriweather	2,300.00
First	Arkansas	Virgie G. Phillips	Jimmie White	2,200.00
Fourth	Louisiana	Bonita Black	Yvonne Winzer	2,200.00
Fourth	South Louisiana	Rose Locksey	Romona Hyche	2,100.00
Eighth	Dallas/Ft. Worth	Dorothy L. Johnson	Gloria J. Craig	2,020.00
Eighth	East Texas	Crystal D. Lewis	Diana Hardiman	2,000.00
Sixth	West Georgia	Linda Bowens	Brenda Wise	1,800.00
Third	Kansas/ Missouri	Liz Bishop	Margaret Pender	1,700.00



*“Education is the greatest gift of life; it should never stop.” ----Tony Clark*



# Helena B. Cobb Higher Education

## Four Year Scholarship Recipients

2015 – 2019 Winners

*“Chatting with Students”*

## Progress Reports

**Nesheika Caleb**



*I am in my junior year at Oglethorpe University in Atlanta, Ga and majoring in Human Resources Management. While I was involved in many activities in my freshmen and sophomore year, I continued to do so. I am a Student Ambassador for the Office of Admission on campus, meaning that I give prospective students tours of the campus. Also, I am the Co-President of the National Student of Leadership and Success, where we are helping students to become better leaders by setting and achieving their goals. This past summer, I had the opportunity to intern at Federal Home Loan Bank in Des Moines, IA in their Human Resources Department where I learned many key aspects of the career in HR.*

**Chaston L. Brooks**



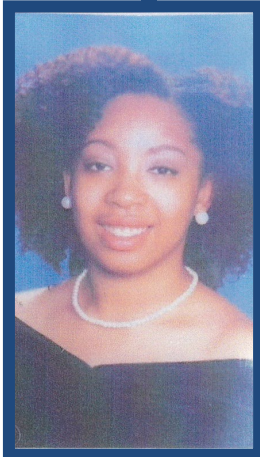
*The 2017 Spring Semester was very challenging. During this semester, I was pushed to my maximum potential academically. Of all three semesters, the Spring Semester set a tone and a discipline that I know would prepare me for the journey ahead. As I entered my fourth semester, there was little to no stress over facing the tough tasks of balancing academics and daily college life. As a result, my work ethic, staying on task and managing athletics became less challenging. As I continue to gain experience in the classroom, as well as sports, I have developed relationships and continue to look forward with making relevant connections for my future and development of my life. With the grace of God and the help of my family, I can do all things through Christ who strengthens me. I will achieve all my goals and then some. Each day is still a challenge and I will strive to make each day better. I would like to thank Ms. Jacqueline I. Scott and the missionaries for having faith in me.*

Progress Report Spring 2017



This semester has been really exciting and I have had numerous opportunities presented to me. I've been working for the University Program Board for a year now. This upcoming year I will be the president of the organization. I was the treasurer of the Residential Housing Association as well this past semester. Over the past four semesters I have spent in college I have gotten really involved and have found where I belong. I am still majoring in Civil Engineering but I am trying to decide if I want to continue pursuing a minor in Spanish or major in Spanish in addition to engineering. Since the University of Missouri – St. Louis engineering program is a joint program with Washington University in St. Louis this upcoming fall I will start my engineering classes at the Washington University. I was even asked by Assistant Director of Student Services of the engineering department to be a mentor and tutor. This summer I will help with the engineering portion of New Student Orientations as a part of being a mentor. I was also asked by the Student Government Association President to fill-in in his absence by welcoming the new students at orientation on behalf of the student body since I am a student leader as well. I have been a University Ambassador all four semesters of college. This past spring semester I became a Lead-In-Training Ambassador and for the upcoming school year I will be a Lead Ambassador. I have even remained involved outside of campus with the West County Community Action Network. I continue to lead the organizing team called Responsibility but it has taken us some time to get off of the ground. Right now we are working with a family seeking justice for a situation their son was involved in when his white counterpart did not receive equal discipline from the school. I have gotten very involved over the last four semesters at UMSL as a student leader and although at times it seems hard and like there are not enough hours in a day to do everything I want and everything that people ask me to do I enjoy every second of it.





June 9, 2017

Dear Women's Missionary Council,

Once again, I am grateful to be a recipient of the Helena B. Cobb Scholarship. This scholarship has not only afforded me the opportunity to attend the university of my dreams, but to do so without acquiring any debt. I am eternally grateful for your continued support of my scholastic endeavors and am extremely excited to write to you about my Spring 2017 semester.

During this semester, I served as the Vice President, Membership of the Delta Nu Chapter of Sigma Alpha Iota International Music Fraternity. This meant that I would be in charge of recruitment projects and activities for the organization as well as ensuring that all members, current and alumnae maintained fulfilling beneficial relationships. To fulfill these duties I launched an alumnae relations campaign and proposed a biweekly newsletter that will inform alumnae members of activities that will be taking place on the university campus. I am proud to announce that in conjunction to successfully leading member-in-training sessions for our three newest members, I was able to get both of the aforementioned programs approved and they will be instated in the coming semester!

Furthermore, this semester, I was invited to become a member of the National Society of Leadership and Success, a prestigious honor society. Currently, I am working to complete the requirements for initiation for this society. Also, I was invited to join the Junior Experiential Learning (JEL) Program and Howard University. JEL is a program that matches students with mentors in their various career fields to advise, support, and encourage them during the remainder of their studies as well as provides them with useful career advice and practice.

Over the summer, I am interning at Chosen Productions, Inc which is a nonprofit in North Carolina with the purpose of ensuring that African American girls in the Triad and surrounding areas have college access and are prepared to attend universities.

As you can see, this year is full of rewarding opportunities and responsibilities for me, but I am definitely up to taking on the challenge! Thank you again for your support, prayers, and for awarding me this scholarship. I look forward to continuing the share with you what God continues to do in my life.

With love,

Aliyah W. Bivens



Bryce Bentley's Progress report (6/11/17)

For my second year, the rigor of my class schedule increased but nevertheless, I have been able to keep up with the material. My overall GPA continues to slightly increase after each quarter. This spring quarter the classes I took were genetics, biochemistry, physics and a public health class that relates to health disparities in at risk communities. The public health class is required for this internship called TEACH (Together Educating and Advocating Community Health). For the program, interns take classes regarding healthcare and health disparities in minority communities. We also have the opportunity to design our own health modules or a curriculum to be presented to elementary students in the Venice area in Los Angeles. I recently joined the program so I have only taken the first class for the internship but in the summer I will be working with my peers to present health modules to the students this August.

I have become more active with extracurricular activities as well. I still am a tutor in the Watts Tutorial Program. I am also still a member of the Black Hypertension whose goal is to spread awareness of high blood pressure within the African American community in Los Angeles. Due to my dedication and hard work in the organization, the board members selected me to be the External Director for next year. My role will be to reach out to various programs and schools in order to host health fairs there. I also joined a new health related organization called the Saving Hearts Foundation. Its mission is to educate the Los Angeles community on the dangers of Sudden Cardiac Arrest in children and young adults. We host heart screenings with real Electrocardiogram (ECG) machines to detect anomalies within an individual's heart. I have learned how to use the ECG machines as well as take blood pressure manually.

In addition to health related clubs, I have been participating in various cultural and religious clubs. I have attended Bible study sessions hosted by the Black Campus Ministry club, whose mission is to bring Black Christian students together as a community. A friend of mine who is Coptic Orthodox Christian also introduced me to another Christian club that talks about the religious traditions that are practiced by Christians in Egypt. Coming to UCLA, I found that a lot of my peers come from various religious or secular backgrounds. While it is great to meet diverse groups of people, I am glad that I found two clubs where I can share my love and faith among other believers.

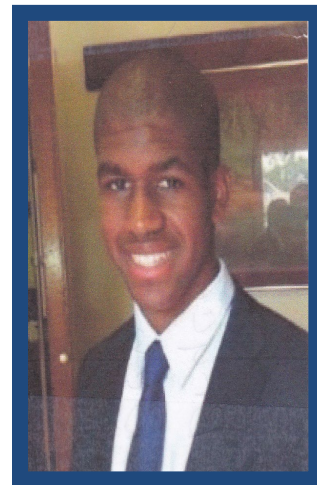
I recently started volunteering at a hospital that is connected with UCLA in Santa Monica. The program is called Companion Care. Volunteers visit patients that are in the Geriatrics unit and offer them socialization and company to improve their mood. Volunteers also accompany patients on walks around the facility, feed the patients who have limited motor control or cognitive abilities and assist nurses and physicians with gathering supplies. I started volunteering in the beginning of April and I have loved the experience! I have met so many different people with their own interesting life stories. I have gained more knowledge on the equipment the nurses and physicians use to treat or examine patients. It brings me so much joy when someone I have visited expresses their gratitude for being with them during a time that is often filled with isolation or feelings of loneliness. My experiences in the hospital has filled me with more inspiration to become a physician.

Speaking of becoming a physician, I will be studying for and taking the Medical College Admissions Test (MCAT) during the summer, on September 1st. I have completed all of the related pre requisite courses that will be a part of the exam and I feel ready for the exam. The exam is 6 hours and 15 minutes long and covers material on the subjects of Biology, Chemistry, Physics and Reading Comprehension. There is a lot of material to cover, but I am determined to focus in order to get an above average score.

In my last progress report I mentioned that I would work on my resume by the time I sent in the next report. Over the past few months I have been engaging in more activities and improving upon my grades. I plan to continue finding new activities and organizations to engage in as time goes on. Thank you for supporting my education and helping this all be possible. I am always grateful for what you all do for me and the other scholarship recipients. Thank you and God bless!!

Sincerely,

Bryce Bentley

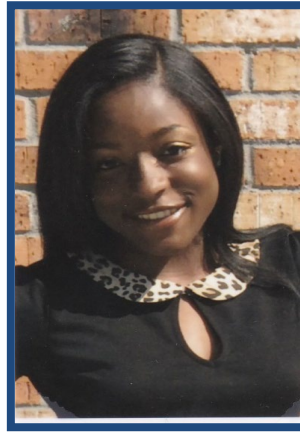




**Sascha Young**

**5783 Lowry Rd.**

**Memphis, TN 38115**



*I am now in my first semester as a junior at the University of Memphis. I can apply for graduation soon because I have enough credits to classify as a senior. I have not decided yet, if I would like to pursue early graduation. I am still maintaining my 3.7 GPA. I am a first generation student; therefore this brings me great joy. I know I did well only because of God's grace and mercy. Prayer helped through my semester and I'm so excited about the results and can't wait to move forward. I'm currently employed part time with Courtyard Marriott hotel and I am a success coach in the class rooms at East High School. I recently joined Black Student Association, which allows for minorities to have voice and free expression at a predominantly white college. I ask that the Women's Missionary Council keep me in their prayers. I am so grateful for the experience.*

***Thank You!***

***Sascha Young***



**Women's Missionary Council  
Helena B. Cobb Scholarship  
7255 Richmond Road  
Memphis, TN 38125**



**Dear Ladies of the Women's Missionary Council,**

**I am writing this letter to update you on my journey since receiving the Helena B. Cobb Scholarship. I am very happy and appreciative to have been one of the recipients for this scholarship. It has been a major help for me throughout my college career. I am now ending the first half of my junior year. I plan to graduate from Alabama State University in May of 2019. As the semester is ending, I am continuously striving to maintain and raise my GPA. I now have a 3.2 GPA. This school year has been full of surprises but the best one was when I received another scholarship, helping me further my education. I received this scholarship through the university and it is called the Trust Scholarship. I have also been inducted into Collegiate 100 and announced the Vice-President of the Student Government Association Marketing Branch. As an Education Major, I am already being offered jobs at local schools here in Montgomery and considering Graduate Programs at other universities. This semester has been wonderful, and I owe it all to God. I just want to thank you all again for the major contribution to my education.**

**Sincerely,**

**LaBrenica Frazier**

**5<sup>th</sup> Episcopal District**



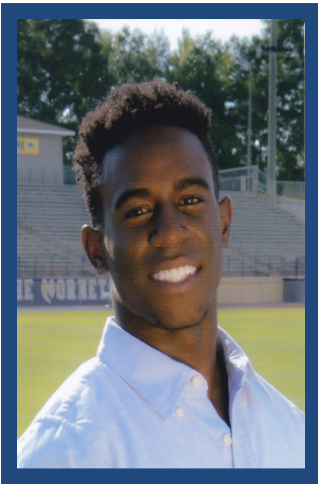


# P. Ann Pegues Save Our Sons

Four Year Scholarship Recipients  
2015 – 2019 Winners

*“Chatting with Students”*

## Progress Reports



### **Christopher Miller**

University of Tennessee Chattanooga • Chattanooga, Tennessee

*My progress at the University of Tennessee at Chattanooga is doing well. The football has come to an end but my studies have not. I have not had much involvement with any new organizations or activities around my campus due to how busy my schedule is in the Fall. If all goes right, I will have big news come the Spring Semester with some important things I will share with you in later emails. Lastly, to conclude my Fall Semester, I have started shadowing a radio host in the local Chattanooga area to get a feel of what I want to do when I graduate and start my career.*



**Empowerment  
Through Education**

*Living A Dream,  
Building A Future*

## *“Chatting with Students”*

# *Thank You*

*I would like to Thank  
The Women's Missionary  
Council for awarding me a  
Helena B. Cobb  
Scholarship. I appreciate  
it very much and it is being  
used for my college  
expenses! Thank You!!*

*Brittany Bethel  
University of Tennessee @  
Knoxville*

**To: The Women's Missionary Council**

*Thank You for awarding me a  
scholarship. I am so appreciative  
of you because it helped me pay for  
my Spring Semester textbooks.  
Although the work is challenging, I  
am excelling and loving my college  
experience. I'm thankful that God  
continues to bless me and I'm  
thankful for my church – Trinity  
CME. Thank you again for blessing  
me!*

*Sincerely,  
Courtney Oliver  
DePauw University*

*Education is the most powerful weapon  
which you can use to change the world.*

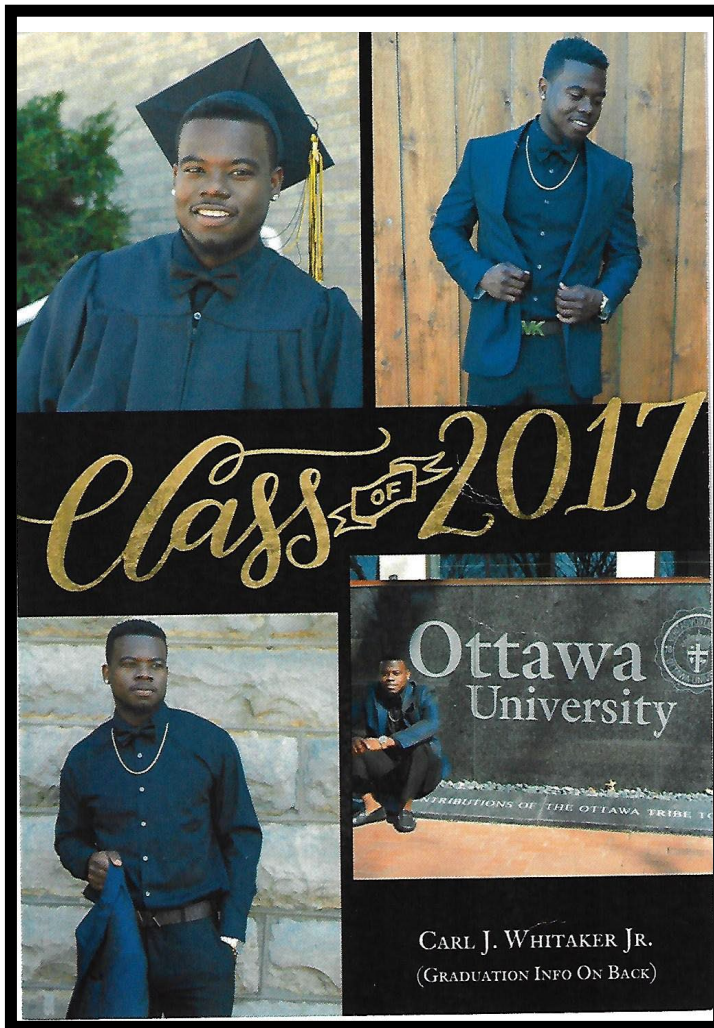
Nelson Mandela



**May 5, 2017**

**To: Helena B. Cobb Scholarship Committee & Ms. Jacqueline I. Scott**

*Just a note of Thank You for the years you helped me with the \$200.00 scholarship towards my college education. I am proud to say with your help I will be graduating with a Bachelor Degree in Systems Information. Thank you for investing in my future.*  
*Carl JoAnthony Whitaker, Jr.*



*Ottawa University  
announces that  
Carl (C.J.) Whitaker Jr.  
is a candidate for the degree of  
Bachelor of Arts  
in  
Management Information Systems  
at the  
152nd Anniversary  
Commencement Ceremony  
Saturday, May 6th  
2017  
10:30 A.M.  
Fredrikson Chapel  
Ottawa, Kansas*



# Recommendations

1. That we continue to award annual scholarships to high school graduates each year and every society should support our Helena B. Cobb Scholarship Fund with observances on or near the second Sunday in January. All funds raised by this observance should be mailed to the Council's treasurer and a copy of the payment be mailed to the Council's Vice President.
2. That each Region Vice President of the Women's Missionary Society shall forward application forms for the Helena B. Cobb Annual Scholarship Grant to the Council Vice President no later than January 20<sup>th</sup> of each year.
3. That we continue to present the Helena B. Cobb Higher Education (Four Year) Scholarship Program with competition beginning on the local level in 2016, District 2017, Region 2018, Episcopal and Quadrennial 2019 levels and the P. Ann Pegues Save Our Sons (SOS) Higher Education (Four Year) Scholarship Program follows the same procedures.
4. That all funds raised for the Helena B. Cobb Scholarship Programs must be reported by November 20<sup>th</sup> of the calendar year in order for credit to be given to respective Regions.
5. That each Region contributes at least \$1,000.00 to our Helena B. Cobb Program and also contributes \$500.00 each year to our P. Ann Pegues SOS Scholarship Program.
6. That missionaries on each level encourage their youth to attend our CME Colleges and/or one of our Historically Black Colleges or Universities.
7. That each student notifies the Council Vice President immediately if there is a change in the college or university they listed on their application (Annual and Four Year).



*“Education is the  
freedom.”*



*to unlock the golden door of*

*-----George Washington Carver*

*Women's Missionary Council  
Of the  
Christian Methodist Episcopal Church*

**2018 Executive Board Meeting**

***TREASURER'S REPORT***



**Carol Ferrell, Treasurer**

***“Celebrating 100 Years and Embracing the Future”***

**MeadowView Marriott Conference Resort and Convention Center  
Kingsport, TN  
February 15 – February 20, 2018**



**Dr. Princess Pegues, President  
Bishop James B. Walker, Patron Bishop  
Bishop Henry M. Williamson, Sr., Host Bishop  
Bishop Lawrence L. Reddick III, Senior Bishop**

## *The Treasurer's Report*

To: President Dr. Princess A. Pegues, Senior Bishop Lawrence L. Reddick, III, Patron Bishop James B. Walker, host Bishop Henry M. Williamson, Sr., the College of Bishops and their spouses and widows, Council Officers, Immediate Past President, Dr. Elnora P. Hamb, Past President, Dr. Judith E. Grant, President Emeritus, Dr. Sylvia M. Faulk, Executive Board Members, General Officers, Judicial Council, Connectional Officers, Clergy, Missionaries, Laity and all of God's children.

I greet you in the name above all others, Jesus Christ!

It has been my pleasure to serve as your Treasurer, but as I stand today, to make my last Executive Board report, I pause to say thank you for your prayers and support and for the support that you have shown toward the Council.

I have provided a financial report for the Women's Missionary Council of the Christian Methodist Episcopal Church for the year 2017.

In accordance with our bylaws, my records were submitted at the end of the fiscal year 2017 to the Certified Public Accountant, Selwyn Blanchard. Mr. Blanchard will perform an engagement review of my records and the report is available for your review.

My report will reflect the following financial reports: Summary of Assets, Summary of Income and Expenses for the year ended December 31, 2017 and Region Asking Summary Report for 2017-2018.

I ask that you continue to financially support the Council mission and programs.

Humbly submitted,

*Carol Ferrell*

Carol Ferrell, Treasurer  
Women's Missionary Council



**CHRISTIAN METHODIST EPISCOPAL CHURCH**  
**WOMEN'S MISSIONARY COUNCIL**  
**STATEMENT OF ASSETS, LIABILITIES, AND NET ASSETS - CASH BASIS**  
**December 31, 2017**

**ASSETS**

Cash

General Operations	\$	74,460
Mission Outreach		54,620
Missionary Messenger		16,450
Scholarship Education		76,952
Special Account		48,385

Total Cash		<u>270,867</u>
------------	--	----------------

<b>TOTAL ASSETS</b>	<b>\$</b>	<b><u>270,867</u></b>
---------------------	-----------	-----------------------

**LIABILITIES**

\$	-
----	---

**NET ASSETS**

<u>270,867</u>
----------------

**TOTAL NET ASSETS**

<b>\$</b>	<b><u>270,867</u></b>
-----------	-----------------------

**CHRISTIAN METHODIST EPISCOPAL CHURCH**  
**WOMEN'S MISSIONARY COUNCIL**  
**STATEMENT OF SUPPORT, REVENUE, AND EXPENSES - CASH BASIS**  
**FOR THE YEAR ENDED DECEMBER 31, 2017**

**REVENUES**

General Church Allocation	\$	39,901
2017 Executive Board		71,103
2018 Executive Board		41,418
Scholarship		94,127
Council Asking		65,493
Hurricane Relief		3,758
Life Memberships		4,850
Scholarship Refunds		4,600
Missionary Messenger		30,890
Organization and Promotion		2,991
Literature and Publication		1,265
Pledges		3,575
Stoles		10,977
Transfers In		74,735
Other Revenues		1,105
<b>Total Revenues</b>		<u>450,788</u>

**EXPENSES**

Expenses		465,429
<b>Total Expenses</b>		<u>465,429</u>

Other Changes		
Scholarship Returns		(2,800)
Prior year payroll adjustment		(683)
Transfer In		74,735
Transfer Out		<u>(74,735)</u>
Other Changes - Net		<u>(3,483)</u>

**Change in Net Assets** (11,158)

Net Assets as of January 1, 2017		282,025
Change in Net Assets		<u>(11,158)</u>

Net Assets - End of Year 2017 \$ 270,867

**CHRISTIAN METHODIST EPISCOPAL CHURCH  
WOMEN'S MISSIONARY COUNCIL  
STATEMENT OF FUNCTIONAL EXPENSES - CASH BASIS  
FOR THE YEAR ENDED DECEMBER 31, 2017**

	<b>EXPENSES</b>
2017 Executive Board	\$ 109,475
2018 Executive Board	5,323
Advertisement	100
Care and Concern	1,186
Employee Bond	400
Bank Fees	25
Donations	1,500
Honorariums	1,000
Hurricane Relief	1,250
Literature & Publication	5,785
Missionary Messenger	36,396
Office Expense	11,057
Overseas Mission	70,493
Postage	505
President's Expense	17,106
Professional Services	2,400
Promotional Products	1,282
Retirement Gifts	14,400
Returned Deposits	475
Salaries	23,908
Scholarships	82,200
Special Representation	408
Storage Fee	900
Summit 2017	2,712
Other Expenses	410
Online Transfer Out	74,735
<b>Total Expenses</b>	<b><u>\$ 465,429</u></b>



**WOMEN'S MISSIONARY COUNCIL  
REGION SUMMARY REPORT  
2017 - 2018**

EPISCOPAL DISTRICT	REGION	H B COBB	S.O.S.	HUNGER & MEALS FOR MILLIONS	OVERSEAS MISSION	WORLD FEDERATION	H.O.P.E.	ORGANIZATION & PROMOTION, PLEDGES, FINE ART AND OTHER***	TOTAL
FIRST	ARKANSAS	\$ 1,700.00	\$ 500.00	\$ 500.00	\$ 500.00	\$ 100.00	\$ 125.00	\$ 125.00	\$ 3,550.00
	EAST TENNESSEE	\$ 1,800.00	\$ 500.00	\$ 500.00	\$ 500.00		\$ 250.00	\$ 100.00	\$ 3,650.00
	WEST TENNESSEE	\$ 4,225.00	\$ 1,500.00	\$ 1,436.85	\$ 4,525.90	\$ 400.00	\$ 300.00	\$ 450.00	\$ 12,837.75
SECOND	KENTUCKY	\$ 1,000.00	\$ 500.00	\$ 250.00	\$ 250.00	\$ 31.10		\$ 100.00	\$ 2,131.10
	OHIO CENTRAL INDIANA	\$ 1,200.00	\$ 500.00	\$ 100.00	\$ 100.00	\$ 200.00	\$ 100.00	\$ 100.00	\$ 2,300.00
THIRD	KANSAS/MISSOURI	\$ 1,200.00	\$ 500.00	\$ 295.00	\$ 918.63		\$ 200.00	\$ 95.00	\$ 3,208.63
	MICHIGAN-INDIANA	\$ 3,077.00	\$ 1,610.00	\$ 577.47	\$ 927.00				\$ 6,191.47
	SE MO/ IL & WI	\$ 4,772.50	\$ 1,040.00	\$ 1,909.70	\$ 1,936.00	\$ 307.45	\$ 1,565.34	\$ 25.00	\$ 11,555.99
FOURTH	LOUISIANA	\$ 1,500.00	\$ 700.00	\$ 650.00	\$ 700.00	\$ 280.00	\$ 500.00	\$ 375.00	\$ 4,705.00
	MISSISSIPPI SOUTH	\$ 1,190.00	\$ 1,280.00	\$ 1,927.00	\$ 1,110.00	\$ 562.00	\$ 500.00	\$ 1,225.00	\$ 7,794.00
	NORTHEAST MS	\$ 3,000.00	\$ 1,000.00	\$ 2,300.00	\$ 3,382.07	\$ 121.60	\$ 500.00	\$ 2,400.00	\$ 12,703.67
	SOUTH LOUISIANA	\$ 1,500.00	\$ 600.00	\$ 550.00	\$ 550.00	\$ 50.00	\$ 500.00	\$ 150.00	\$ 3,900.00
FIFTH	BIRMINGHAM	\$ 2,500.00	\$ 500.00	\$ 250.00	\$ 500.00	\$ 50.00	\$ 100.00		\$ 3,900.00
	FLORIDA	\$ 2,280.00	\$ 760.00	\$ 275.00	\$ 570.00	\$ 320.00		\$ 25.00	\$ 4,230.00
	N CENTRAL ALABAMA	\$ 1,740.00	\$ 600.00	\$ 570.00	\$ 1,000.00	\$ 140.00	\$ 100.00	\$ 100.00	\$ 4,250.00
	SOUTHEAST ALABAMA	\$ 2,000.00	\$ 600.00	\$ 300.00	\$ 300.00	\$ 196.50	\$ 225.00	\$ 300.00	\$ 3,921.50
SIXTH	CENTRAL GEORGIA	\$ 2,500.00	\$ 1,000.00	\$ 500.00	\$ 2,000.00	\$ 200.00	\$ 500.00	\$ 125.00	\$ 6,825.00
	GEORGIA NORTH	\$ 5,800.00	\$ 2,326.00	\$ 397.10	\$ 332.30	\$ 100.00	\$ 200.00	\$ 400.00	\$ 9,555.40
	SOUTH GEORGIA	\$ 1,000.00	\$ 500.00	\$ 700.00	\$ 500.00		\$ 500.00		\$ 3,200.00
	WEST GEORGIA	\$ 1,200.00	\$ 600.00	\$ 1,772.00	\$ 355.00	\$ 25.00	\$ 500.00	\$ 150.00	\$ 4,602.00
	HAITI				\$25.00				\$ 25.00
SEVENTH	CAROLINA	\$ 2,465.00	\$ 1,000.00	\$ 3,925.50	\$ 2,700.00	\$ 600.00	\$ 600.00	\$ 1,825.00	\$ 13,115.50
	NEW YORK WASHINGTON	\$ 3,000.00	\$ 1,000.00	\$ 1,262.00	\$ 1,195.00	\$ 500.00	\$ 292.00	\$ 1,025.00	\$ 8,274.00
EIGHTH	CENTRAL TEXAS	\$ 250.00	\$ 250.00						\$ 500.00
	DALLAS/FT WORTH	\$ 1,520.00	\$ 500.00	\$ 1,200.00	\$ 1,500.00	\$ 40.00	\$ 500.00	\$ 155.00	\$ 5,415.00
	EAST TEXAS	\$ 1,700.00	\$ 300.00		\$ 1,500.00		\$ 100.00	\$ 100.00	\$ 3,700.00
	NW TEXAS	\$ 210.00	\$ 160.00	\$ 70.00	\$ 105.00	\$ 33.40	\$ 105.00	\$ 150.00	\$ 833.40
	SE TEXAS	\$ 5,000.00	\$ 500.00	\$ 1,200.00	\$ 1,500.00	\$ 57.00	\$ 500.00		\$ 8,757.00
	JAMAICA				\$25.00				\$ 25.00
NINTH	ALASKA PACIFIC	\$ 1,041.00	\$ 500.00	\$ 170.00	\$ 158.00			\$ 25.00	\$ 1,894.00
	ARIZONA/N MEXICO	\$ 600.00	\$ 650.00	\$ 275.00	\$ 275.00			\$ 280.00	\$ 2,080.00
	NORTHERN CALIFORNIA	\$ 2,314.69	\$ 1,011.00	\$ 1,334.00	\$ 500.00	\$ 21.12	\$ 500.00	\$ 400.00	\$ 6,080.81
	OKLAHOMA	\$ 1,895.00	\$ 1,050.00	\$ 660.00	\$ 605.00	\$ 110.00	\$ 500.00	\$ 575.00	\$ 5,395.00
	SOUTHERN CALIFORNIA	\$ 2,800.00	\$ 1,200.00	\$ 300.00	\$ 650.00	\$ 200.00	\$ 500.00		\$ 5,650.00
TENTH					\$25.00				\$ 25.00
ELEVENTH					\$25.00				\$ 25.00
TOTAL		\$ 67,980.19	\$ 25,237.00	\$ 26,156.62	\$ 31,744.90	\$ 4,645.17	\$ 10,262.34	\$ 10,780.00	\$ 176,806.22

\*\*\*This column is a total of all monies received for the categories listed. If monies were sent in for purposes other than those listed, they were classified as "Other".

Organization & Promotion = \$3190 (this includes Pledges)

Fine Arts= \$3190

Other= \$4400 (Founder's Day- \$300; Life Membership-\$3700; Bread for the World- \$100; American Bible Society- \$100;

Church Women United- \$100; National Council of Negro Women- \$100)

(Monies that were sent in directly from individuals, local churches or districts were credited to the applicable Region, if it was noted in the correspondence)

# Reminders

1. All checks or money orders should be made payable to the to the Women's Missionary Council or WMC.
2. When submitting funds directly to the Treasurer from your local church, district or individually, please include your Region in the correspondence, so that the Regions can be properly credited.

# Report of the Editor of the *Missionary Messenger*

Juliet Waddell Pittman



*Women's Missionary Council Executive Board Meeting 2018*  
*Editor's Report*



*"Investing in the Future through Education, Outreach and Service"*

*MeadowView Marriott Conference Resort & Convention Center*  
*Kingsport, Tennessee 37660*

*February 15 – February 20, 2018*

*Dr. Princess A. Pegues, International President*

*Bishop James B. Walker, Patron Bishop*

*Bishop Henry M. Williamson, Sr., Host Bishop*

*Bishop Lawrence L. Reddick III, Senior Bishop*

## *The Editor's Report*

*To: International President, Dr. Princess A. Pegues, Senior Bishop Lawrence L. Reddick, III, Patron Bishop James B. Walker, host Bishop Henry M. Williamson, Sr., the College of Bishops, their wives and widows, Council Officers, Immediate Past President, Dr. Elnora P. Hamb, Past President, Dr. Judith E Grant, President Emeritus, Dr. Sylvia M. Faulk, Executive Board Members, General Officers, Judicial Council, Connectional Officers, Clergy, Missionaries, Laity and guests.*

*I greet you in the name of our Lord and Savior, Jesus Christ!*

*Giving thanks always for all things unto God and the Father in the name of our Lord Jesus Christ.  
Ephesians 5:20*

*It is with much humility that I submit my third Executive Board report as your editor. My most sincere thanks to my missionary sisters for the support you have given by submitting articles, subscribing, gifting subscriptions, encouraging the editor and praying for The Messenger. Thanks so very much to all who responded to my calls for assistance.*

*Special thanks to the ladies who assist me, Mrs. Doris F. Boyd, Mrs. Dorothy P. Newman, Mrs. Letha G. Reed and Mrs. Wanda Cole Mason. Every month they work with me to produce quality articles with an appealing look. Lastly, thanks so very much to all who subscribe, clergy, lay and especially missionaries.*

*My goals for the magazine have not changed and that is to grow in substance, grow with subscriptions and become the very best it can be. To expound on these goals see the following:*

- To receive at least two articles from each region in the next year*
- To have articles promoting and highlighting our children, youth and young adults*
- To offer incentives to the regions with the highest percentage increase in subscriptions from now until the next Executive Board Meeting*

*Make a joyful noise to the Lord, all the earth!*

*Psalm 100:1*

*The Missionary Messenger can celebrate the following accomplishments.*

- *The Missionary Messenger is being published monthly*
- *The Statement of Ownership was filed with the United States Postal Service and was published in the October, 2017 issue*
- *Purged the mailing list of all subscribers who had not paid since August, 2017*
- *There are subscribers in every region*



*Commit your works to the Lord, and your thoughts will be established.*

*Proverbs 16:3*

*This third year has been one of changes and different challenges. Yet, with God's help and your cooperation it was a successful one. Your support, prayers, article submissions and subscriptions are still vital to the continued success of The Messenger. Please continue to partner with me as we "invest" in The Missionary Messenger.*

*Lord in my life, work in me:*

*To plan with wisdom,*

*To guide with vision,*

*To lead with humility,*

*To listen with understanding,*

*To work with excellence,*

*To succeed in a way that honors You.*

*Sincerely,*

*Juliet Waddell Pittman*

## **Messenger Subscription Report by Regions**

### **July – November 20, 2017**

#### **First Episcopal District**

- Arkansas Region 43
- East Tennessee Region 56
- West Tennessee Region 123

#### **Second Episcopal District**

- Kentucky Region 31
- Ohio-Central Indiana Region 33

#### **Third Episcopal District**

- Kansas-Missouri Region 31
- Michigan-Indiana Region 60
- Southeast Missouri, Illinois & Wisconsin Region 116

#### **Fourth Episcopal District**

- North-East Mississippi Region 79
- Mississippi-South Region 66
- Louisiana Region 41

### **Fifth Episcopal District**

- Birmingham Region 21
- North Central Alabama Region 61
- Southeast Alabama Region 78
- Florida Region 30

### **Sixth Episcopal District**

- Central Georgia Region 20
- North Georgia Region 37
- South Georgia Region 16
- West Georgia Region 8

### **Seventh Episcopal District**

- Carolina Region 75
- New York-Washington Region 123

### **Eighth Episcopal District**

• Central Texas Region	50
• Dallas-Fort Worth Region	51
• East Texas Region	57
• Northwest Texas Region	24
• Southeast Texas Region	70

### **Ninth Episcopal District**

• Alaska-Pacific	14
• Arizona-New Mexico	14
• Northern California	39
• Oklahoma-Muskogee	35
• Southern California	36

<b>Total</b>	<b>1540</b>
--------------	-------------



## **Schedule for Article Submissions**

**April, 2018** – Southeast Alabama; South Georgia; Southeast Texas

**May, 2018** – Southeast Missouri, Illinois & Wisconsin; Louisiana

**June, 2018** – Arizona-New Mexico; West Tennessee; Dallas Fort Worth

**July/August, 2018** – New York-Washington; Oklahoma-Muskogee

**September, 2018** – North Central Alabama; North Georgia; Northwest Texas

**October, 2018** – Michigan-Indiana; Mississippi South; West Georgia

**November, 2018** – Arkansas; Ohio-Central Indiana; Florida

**December, 2018** – Central Georgia; Kansas-Missouri; Southern California

## **Article Composition Template**

<b>Who</b>	What society or other group e.g. Church Women United
<b>What</b>	Type program e.g. service project, activity or workshop
<b>When</b>	Date of program
<b>Where</b>	Church, or other venue, and the city and state
<b>Why</b>	Training, service, fund raiser, etc.
<b>How</b>	Details of program or how project was done
<b>Highlight</b>	Anything special that everyone should know
<b>Other</b>	Double check names; provide a title for the article; provide the writer's name/position

## **Article Submission**

For articles submitted by email, software – MS Word and set margin at 1" LRT & B

Pictures – sent electronically format separately and with the document

Jpeg or the original

Please submit articles by the 1<sup>st</sup> of each month

Email – [julietwaddell@yahoo.com](mailto:julietwaddell@yahoo.com)

## Recommendations

1. That an article be submitted annually by our Council committee chairs and departmental secretaries
2. That each region submit two articles annually
3. That all will work to increase subscriptions to 3,000 by 2018
4. That subscription payments be submitted via one region check (as stated in the handbook) Please do not send MULTIPLE CHECKS
5. Please do NOT send CASH
6. That the editor be notified as soon as possible of any address changes or corrections
7. Please send documents in the recommended format. Documents sent in PDF will be returned to the sender.
8. That each region assign a reporter for *The Missionary Messenger*